



THE  
ITALIAN  
TOUCH.  
THE  
PERFECT  
COMPLEMENT  
TO AN  
INDIAN  
KITCHEN.





## HOODS

> HI-LIFE	02 - 03
> I-SMART	04 - 05
> EDS	06
> VERTICAL	06
> BLDC, AUTO CLEAN	07
FILTERLESS, FULL GRILL	07-09
> AUTO SENSE	10
> ETB/BAFFLE FILTERS	11

## HOBBS

> DFS SERIES	12 - 16
> HEXA IND LOTUS SERIES	16 - 17
> LOTUS IND HD SERIES	18 - 19
> SQUARE GRID SERIES	19
> INOX SERIES	20

## BUILT-IN APPLIANCES

> BUILT-IN OVENS	21 - 22
> BUILT-IN MICROWAVE OVENS	23
> BUILT-IN COMBINATION OVENS	24
> WARMER DRAWER	24
> WINE COOLERS	25
> BUILT-IN INDUCTIONS	25
> COOKING RANGES	26
> DISHWASHERS	26

## COOKTOPS

> TOP KNOB CROWN	27
> SLIMLINE SPF	27
> PATIO SPF	28
> DT	28
> CREST	29
> VETRO	29
> INOX/SS	29



# HI-LIFE KITCHENHOODS



## HI-LIFE (DOWN DRAFT)

### DRAFT 90 SS



Size: 90 cm  
Suction Capacity (Max) : 1100 m<sup>3</sup>/h  
Filter: 1 Aluminium Filter  
Controls: Touch  
Finish: Stainless Steel + Glass  
Lighting: LED 2 x 1 W



## HI-LIFE (WALL MOUNTED)

### FEEL



Size: 80 cm  
Suction Capacity (Max) : 801 m<sup>3</sup>/h  
Filter: Grease  
Controls: E-motion  
Finish: Glass Colours  
Lighting: Strip LED 7 W 4000k

### SWEET



Size: 85 cm  
Filter: Grease  
Suction Capacity (Max) : 800 m<sup>3</sup>/h  
Controls: 3s + B Touch  
Finish: Copper, Peltrox, Cast Iron  
Lighting: Strip LED 7 W 4000K



## HI-LIFE (CEILING MOUNTING)



### GLACIER 110 WH



Size: 110 cm  
Suction Capacity (Max) : 1100 m<sup>3</sup>/h  
Filter: Cassette  
Controls: Electronic (Remote)  
Finish: SS + White/Black Glass  
Lighting: LED 2 W x 4 = 8 W

## HI-LIFE (HANGING)

### INTERESTELLAR

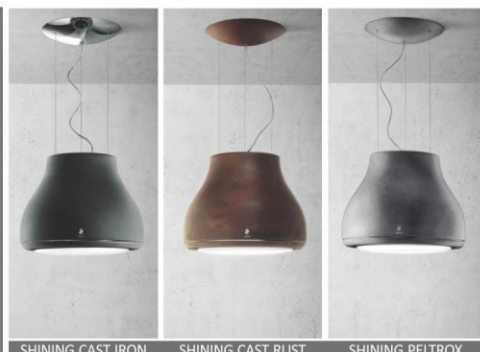


Size: Ø 65 cm  
Suction Capacity (Max) : 400 m<sup>3</sup>/h  
Filter: Grease  
Controls: 3s + B remote  
Finish: Glass  
Lighting:  
Strip LED 9 W + LED 2x20W 3500k

### SHINING



Size: Ø 50 cm  
Suction Capacity (Max) : 400 m<sup>3</sup>/h  
Filter: Grease  
Controls: 3s + B remote  
Finish: Copper, Peltrox, Metal, Rust, Cast Iron  
Lighting: LED 9 W 3500K



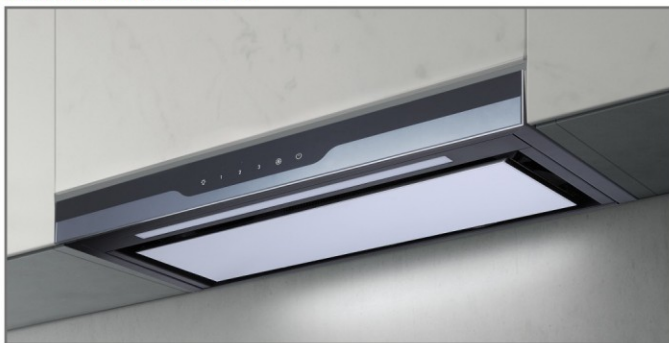
SHINING CAST IRON

SHINING CAST RUST

SHINING PELTROX

## HI-LIFE (UNDER CABINET)

### METEORITE UC35 EDS PLUS



Size: 60/90 cm  
Suction Capacity (Max) : T-1220 m<sup>3</sup>/h  
Filter: 3D Filter, Controls: Touch  
Finish: Black+ Black with Gray  
Lighting: LED Strip  
Technology : EDS

## HI-LIFE (ISLAND)

### CIRCLE ISLAND 350 NERO



Size: Ø 35 cm  
Suction Capacity (Max) : 1000 m<sup>3</sup>/h  
Filter: Cassette  
Controls: Soft Touch Electronic  
Finish: Black  
Lighting: LED 2 x 1 W  
Also available in Stainless Steel Finish  
Also available in Wall Mounted variant in Black Finish



# i-S.M.A.R.T. ... INVERTER ... KITCHEN HOODS WITH BRUSHLESS DC MOTOR



Introducing Future Ready Chimneys  
- The Elica **i-SMART** Range  
with **Inverter + Silent Motor Auto RPM Technology**  
which delivers **5 Star Performance**  
for everything you need today and tomorrow.

## POWER SAVINGS

UPTO  
60%



## POWERFUL SUCTION

EVEN WITH  
9 METRE  
DUCTING



## INTELLI SPEED

AUTO ADJUSTS  
UPTO 2500 R.P.M.  
FOR CONSISTENT  
SUCTION



## SUPER QUIET

DEEP  
SILENCE 2.0  
TECHNOLOGY



## FLEXI VOLTAGE OPERATION

40V TO 280V  
INCLUDING  
HOME INVERTER



MOTION  
SENSOR



WITH RPM  
DISPLAY



LIFETIME  
WARRANTY



MADE IN  
INDIA



AUTO  
SENSE

(OPTIONAL)

## i-SMART SUPER QUIET DEEP SILENCE 2.0

i SMART SPOT H4 EDS LTW NERO



Size: 60/90 cm  
Filter: 3D Filter  
Controls: Capacitive Touch Control  
with Motion Sensor  
Speed : 25 with RPM Display  
Motor RPM (Max) : 2500

Input Power : 90 W  
Finish: Black  
Lighting: LED Lamps  
Technology :  
Inverter with Deep Silence 2.0  
Warranty : Lifetime



## i-SMART SUPER QUIET DEEP SILENCE 2.0

i SMART SPOT H6 EDS LTW NERO



Size: 60/90 cm  
Filter: 3D Filter  
Controls: Capacitive Touch Control  
with Motion Sensor  
Speed : 24 with RPM Display  
Motor RPM (Max) : 2500

Input Power : 90 W  
Finish: Black  
Lighting: LED Lamps  
Technology :  
Inverter with Deep Silence 2.0  
Warranty : Lifetime



i SMART GALAXY EDS LTW NERO



Size: 60/90 cm  
Filter: 3D Filter  
Controls: Capacitive Touch Control  
with Motion Sensor  
Speed : 25 with RPM Display  
Motor RPM (Max) : 2500

Input Power : 90 W  
Finish: Black  
Lighting: LED Lamps  
Technology :  
Inverter with Deep Silence 2.0  
Warranty : Lifetime



i SMART GLACE EDS LTW NERO



Size: 60/75/90 cm  
Filter: 3D Filter  
Controls: Capacitive Touch Control  
with Motion Sensor  
Speed : 24 with RPM Display  
Motor RPM (Max) : 2500

Input Power : 90 W  
Finish: Black  
Lighting: LED Lamps  
Technology :  
Inverter with Deep Silence 2.0  
Warranty : Lifetime



## i-SMART BAFFLE & CASSETTE FILTER

i SMART KITTY LTW 60/75 NERO



Size: 60/75 cm  
Filter: Baffle & Cassette Filter  
Controls: Capacitive Touch Control  
with Motion Sensor  
Speed : 24 with RPM Display  
Motor RPM (Max) : 2500

Input Power : 90 W  
Finish: Black  
Lighting: LED Lamps  
Technology : Inverter  
Warranty : Lifetime



## i-SMART BAFFLE FILTER

### I SMART SPOT H6 BF LTW NERO



Size: 60/90 cm  
Filter: Baffle Filter  
Controls: Capacitive Touch Control with Motion Sensor  
Speed : 24 with RPM Display  
Motor RPM (Max) : 2500

Input Power : 90 W  
Finish: Black  
Lighting: LED Lamps  
Technology : Inverter  
Warranty : Lifetime



## i-SMART BAFFLE FILTER WITH HEAT AUTO CLEAN

### I SMART GLACE HAC BF LTW NERO



Size: 60/75/90 cm  
Filter: Baffle Filter  
Controls: Capacitive Touch Control with Motion Sensor  
Speed : 24 with RPM Display  
Motor RPM (Max) : 2500

Input Power : 90 W  
Finish: Black  
Lighting: LED Lamps  
Technology : Inverter with Heat Auto Clean  
Warranty : Lifetime  
Easy to Clean

### I SMART GALAXY BF LTW NERO



Size: 60/90 cm  
Filter: Baffle Filter  
Controls: Capacitive Touch Control with Motion Sensor  
Speed : 25 with RPM Display  
Motor RPM (Max) : 2500

Input Power : 90 W  
Finish: Black  
Lighting: LED Lamps  
Technology : Inverter  
Warranty : Lifetime



## i-SMART FILTERLESS WITH HEAT AUTO CLEAN

### I SMART GLACE FL HAC 90 LTW NERO



Size: 90 cm  
Controls: Capacitive Touch Control with Motion Sensor  
Speed : 24 with RPM Display  
Motor RPM (Max) : 2300  
Input Power : 100 W

Finish: Black  
Lighting: LED Lamps  
Technology : Inverter with Heat Auto Clean  
Warranty : Lifetime  
Easy to Clean  
**Also available in 60/75 cm**

### I SMART GLACE TRIM BF 60 LTW NERO



Size: 60 cm  
Filter: Baffle Filter  
Controls: Capacitive Touch Control with Motion Sensor  
Speed : 25 with RPM Display  
Motor RPM (Max) : 2500

Input Power : 90 W  
Finish: Black  
Lighting: LED Lamps  
Technology : Inverter  
Warranty : Lifetime  
**Also available Island in 90cm**



### I SMART SPOT FL HAC 90 LTW NERO



Size: 90cm  
Controls: Capacitive Touch Control with Motion Sensor  
Speed : 24 with RPM Display  
Motor RPM (Max) : 2300  
Input Power : 100 W

Finish: Black  
Lighting: LED Lamps  
Technology : Inverter with Heat Auto Clean  
Warranty : Lifetime  
Motor : Concealed  
Easy to Clean  
**Also available in 60/75 cm**

### I SMART GLACE TRIM BF 903 LTW NERO



Size: 90 cm  
Filter: Baffle Filter  
Controls: Capacitive Touch Control with Motion Sensor  
Speed : 25 with RPM Display  
Motor RPM (Max) : 2500

Input Power : 90 W  
Finish: Black  
Lighting: LED Lamps  
Technology : Inverter  
Warranty : Lifetime

### I SMART EFL HAC 90 LTW



Size: 90cm  
Controls: Capacitive Touch Control with Motion Sensor  
Speed : 24 with RPM Display  
Motor RPM (Max) : 2000  
Input Power : 200 W

Finish: Black  
Lighting: LED Lamps  
Technology : Inverter with Heat Auto Clean  
Warranty : Lifetime  
Easy to Clean  
**Also available in 60/75 cm**



**ALSO AVAILABLE IN ISLAND**

# EDS DEEP SILENCE KITCHENHOODS



**KITTY SLIM EDS HE LTW T4V LED**



Size: 60 / 90 cm  
Filter: 3D Filter  
Suction Capacity (Max) : 1010 m<sup>3</sup>/h  
Warranty : Lifetime

Controls: Touch T4V  
Finish: Black Glass  
Lighting: LED 2 X 2 W

**METEORITE EDS PLUS HE LTW 120 TOUCH LED S**



Size: 120 cm  
Filter: 3D Filter  
Suction Capacity (Max) : 1220 m<sup>3</sup>/h  
Warranty : Lifetime

Controls: Touch 4 Speed  
Finish: SS  
Lighting: LED Strip

**GLACE EDS HE LTW BK NERO T4V LED**



Size: 60 / 75 / 90 cm  
Finish : Black  
Lighting: 60 cm & 75cm-LED Lamp, 90cm - LED Strip

Filter: 3D Filter  
Suction Capacity (Max) : 1010 m<sup>3</sup>/h  
Controls: Touch T4V  
Warranty : Lifetime

**GALAXY EDS HE LTW T4V LED**



Size: 60/90 cm  
Filter: 3D Filter  
Suction Capacity (Max) : 1010 m<sup>3</sup>/h  
Warranty : Lifetime

Controls: Touch T4V  
Finish: Black  
Lighting: LED

**SPOT H4 EDS HE LTW NERO T4V LED**



Size: 60 / 90 cm  
Filter: 3D Filter  
Suction Capacity (Max) : 1010 m<sup>3</sup>/h  
Warranty : Lifetime

Controls: Touch T4V  
Finish : Black  
Lighting: LED 2 X 1.5 W

**SPOT H4 TRIM EDS HE LTW NERO T4V LED**



Size: 60 / 90 cm  
Filter: 3D Filter  
Suction Capacity (Max) : 1010 m<sup>3</sup>/h  
Warranty : Lifetime

Controls: Touch T4V  
Finish: Black  
Lighting : LED 2 X 1.5 W

Select models available in EDS PLUS with 1220 m<sup>3</sup>/h Suction Capacity (Max), Select models also available in Stainless Steel Finish

## VERTICAL HOODS

**GRACEFUL PLUS ETB**



Size: 60 / 90 cm  
Suction Capacity (Max) : 1220 m<sup>3</sup>/h  
Filter: 1 Cassette, 1 Baffle  
Warranty : Lifetime

Controls: Touch T4V  
Finish: Black Glass  
Lighting: LED 2 x 1.5 W

**KITTY ETB**



Size: 60 / 80 cm  
Suction Capacity (Max) : 1220 m<sup>3</sup>/h  
Filter: 1 Cassette, 1 Baffle  
Warranty : Lifetime

Controls: Touch T4V  
Finish: Black Glass  
Lighting: LED 2 x 1.5 W

**SLIM BLDC 60 NERO**



Size : 60 cm  
Max Air Flow: 1150 m<sup>3</sup>/h  
Filter : 3 nos. Al Cassette  
Control: 9 Speed Touch with BLDC Motor

Finish: Black  
Lighting: LED 2 x 2 W  
Easy to Clean



# BLDC, HEAT AUTO CLEAN & FILTERLESS KITCHENHOODS

BRUSH-LESS DC MOTOR + HEAT AUTO CLEAN + FILTERLESS KITCHENHOODS



FL 900 SPT MAX HAC MS NERO (FULL GRILL)



Size : 90 cm  
Suction Capacity (Max): 1425 m<sup>3</sup>/h  
Heat Auto Clean Technology  
Control: 3 Speed Touch with Motion Sensor, Bigger Suction Area  
590 x 280 mm Filter Grill  
Warranty : 5 Years on Motor & 5 Years Comprehensive

Finish: Black  
Lighting:  
2 X 2 W LED

**Concealed Motor**  
Oil Collector  
Easy to Clean

FL PLUS 900 SPT MAX HAC LTW MS NERO (FULL GRILL)



Size : 90 cm  
Suction Capacity (Max): 1600 m<sup>3</sup>/h  
Heat Auto Clean Technology  
Control: 3 Speed Touch with Motion Sensor, Bigger Suction Area  
590 x 280 mm Filter Grill  
Warranty : Lifetime on Motor & 5 Years Comprehensive

Finish: Black  
Lighting:  
2 X 2 W LED

**Concealed Motor**  
Motion Sensor  
Oil Collector  
Easy to Clean

SPT MAX FL 900 BLDC HAC LTW MS NERO (FULL GRILL)



Size : 90 cm  
Suction Capacity (Max): 1500 m<sup>3</sup>/h  
Heat Auto Clean Technology  
Control: 9 Speed Touch with Motion Sensor (No RPM Display)  
Bigger Suction Area  
590 x 280 mm Filter Grill  
Warranty : Lifetime on Motor & 5 Years Comprehensive

Finish: Black  
Lighting:  
2 X 2 W LED  
**BLDC Motor**  
Oil Collector  
Easy to Clean

SPT MAX PRO PLUS FL 900 BLDC HAC LTW MS NERO (FULL GRILL)



Size : 90 cm  
Suction Capacity (Max): 1600 m<sup>3</sup>/h  
Heat Auto Clean Technology  
Control: 9 Speed Touch with Motion Control (RPM Display)  
Bigger Suction Area  
(590 x 280 mm Filter Grill)  
Warranty : Lifetime on Motor & 5 Years Comprehensive

Finish: Black  
Lighting:  
2 X 2 W LED  
**BLDC Motor**  
Oil Collector  
Easy to Clean

PRO PLUS FL BLDC 600 HAC LTW MS NERO



Size : 60 cm  
Suction Capacity (Max): 1600 m<sup>3</sup>/h  
Heat Auto Clean Technology  
Control: 9 Speed Touch with Motion Control (RPM Display)  
Warranty : Lifetime on Motor & 5 Years Comprehensive  
**Also available in 75 & 90 cm**

Finish: Black  
Lighting:  
2 X 2 W LED  
**BLDC Motor**  
Oil Collector  
Easy to Clean

BLDC FLCG 600 HAC LTW MS NERO



Size : 60 cm  
Suction Capacity (Max): 1600 m<sup>3</sup>/h  
Max Air Flow Capacity  
At Outlet : 1425 m<sup>3</sup>/h  
Heat Auto Clean Technology  
Control: 9 Speed Touch with Motion Control (RPM Display)  
Warranty : Lifetime on Motor & 5 Years Comprehensive  
**Also available in 90 cm**

Finish: Black  
Lighting:  
2 X 1.5 W LED  
**BLDC Motor**  
Oil Collector  
Easy to Clean

EFL-S 611 BLDC HAC LTW VMS



Size : 60 cm  
Suction Capacity (Max): 1500 m<sup>3</sup>/h  
Max Air Flow Capacity  
At Outlet : 1400 m<sup>3</sup>/h  
Control: 9 Speed Touch with Motion Control (RPM Display),  
Heat Auto Clean Technology  
Warranty : Lifetime on Motor & 5 Years Comprehensive  
**Also available in 75/90 cm**

Finish: Black  
Lighting:  
2 X 1.5 W LED  
**BLDC Motor**  
Oil Collector  
Easy to Clean

EFL-S 607 BLDC HAC LTW VMS



Size : 60 cm  
Suction Capacity (Max): 1400 m<sup>3</sup>/h  
Control: 9 Speed Touch with Motion Control (RPM Display)  
Heat Auto Clean Technology  
Warranty : Lifetime on Motor & 5 Years Comprehensive  
**Also available in 90 cm**

Finish: Black  
Lighting:  
1 x 1.5 W LED  
**BLDC Motor**  
Oil Collector  
Easy to Clean

## BRUSH-LESS DC MOTOR + HEAT AUTO CLEAN + FILTERLESS KITCHENHOODS

BLDC FL 600 HAC LTW MS NERO



Size : 60 cm  
Suction Capacity (Max): 1600 m<sup>3</sup>/h  
Max Air Flow Capacity  
At Outlet : 1425 m<sup>3</sup>/h  
Control: 9 Speed Touch with Motion  
Control (RPM Display)  
Heat Auto Clean Technology  
Warranty : Lifetime on Motor & 5 Years Comprehensive  
Also available in 90 cm

Finish: Black  
Lighting:  
2 W x 1 LED  
**BLDC Motor**  
Oil Collector  
Easy to Clean

WDFL 600 BLDC HAC LTW MS NERO



Size : 60 cm  
Suction Capacity (Max): 1500 m<sup>3</sup>/h  
Max Air Flow Capacity  
At Outlet : 1425 m<sup>3</sup>/h  
Control: 9 Speed Touch with Motion  
Control (No RPM Display)  
Heat Auto Clean Technology  
Warranty : Lifetime on Motor & 5 Years Comprehensive  
Also available in 75/90 cm

Finish: Black  
Lighting:  
2 X 2 W LED  
**BLDC Motor**  
Oil Collector  
Easy to Clean

SPT FL 600 BLDC HAC LTW MS NERO



Size : 60 cm  
Suction Capacity (Max): 1500 m<sup>3</sup>/h  
Max Air Flow Capacity  
At Outlet : 1425 m<sup>3</sup>/h  
Control: 9 Speed Touch with Motion  
Control (No RPM Display)  
Heat Auto Clean Technology  
Warranty : Lifetime on Motor & 5 Years Comprehensive  
Also available in 75/90 cm

Finish: Black  
Lighting:  
2 X 2 W LED  
**BLDC Motor**  
Oil Collector  
Easy to Clean

## BRUSH-LESS DC MOTOR + HEAT AUTO CLEAN KITCHENHOODS

WDAT HAC 60 MS BLDC NERO



Size : 60 cm  
Suction Capacity (Max):  
1425 m<sup>3</sup>/h  
Control: 9 Speed Touch with  
Motion Control (No RPM Display)  
Heat Auto Clean Technology  
Warranty : 5 Years on Motor &  
5 Years Comprehensive

Finish: Black  
Filter: Baffle  
Lighting: 1 X 1.5 W LED  
**BLDC Motor**  
Oil Collector  
Easy to Clean  
Also available in 75/90 cm

BLDC T HOOD HAC 60 LTW MS NERO



Size : 60 cm  
Suction Capacity (Max): 1400 m<sup>3</sup>/h  
Control: 9 Speed Touch with Motion  
Control (No RPM Display)  
Warranty : Lifetime on Motor &  
5 Years Comprehensive  
Heat Auto Clean Technology

Finish: Black  
Lighting:  
1 X 1.5 W LED  
**BLDC Motor**  
Oil Collector  
Easy to Clean  
Also available in 90 cm

BLDC BFCG 903 HAC LTW MS NERO



Size : 90 cm  
Suction Capacity (Max): 1600 m<sup>3</sup>/h  
Max Air Flow Capacity  
At Outlet : 1425 m<sup>3</sup>/h  
Control: 9 Speed Touch with  
Motion Control (RPM Display)  
Heat Auto Clean Technology  
Warranty : Lifetime on Motor & 5 Years Comprehensive

Finish: Black  
Lighting:  
2 X 1.5 W LED  
**BLDC Motor**  
Oil Collector  
Easy to Clean

## FILTERLESS/HEAT AUTO CLEAN KITCHENHOODS

EFL GRACEFUL PLUS LTW



Size : 60/90 cm  
Suction Capacity (Max) :  
1425 m<sup>3</sup>/h  
Control: Touch TC3V  
Finish: Black  
Warranty : Lifetime on Motor  
& 2 Years Comprehensive

Lighting: Long LED Lamp  
Concealed Motor  
Oil Collector  
Easy to Clean

EFL-S 607 LTW VMS



Size : 60/90 cm  
Suction Capacity (Max):  
1200 m<sup>3</sup>/h  
Control: 3 Speed Touch with  
Motion Sensor  
Warranty : Lifetime on Motor  
Also available in 90 cm

Finish: Black  
Lighting: 1 X 1.5 W LED  
Oil Collector, Easy to Clean

EFL-S 601 HAC LTW VMS



Size : 60 cm  
Suction Capacity (Max): 1350 m<sup>3</sup>/h  
Max Air Flow Capacity  
At Outlet : 1200 m<sup>3</sup>/h  
Control: 3 Speed Touch with  
Motion Sensor  
Heat Auto Clean Technology  
Warranty : Lifetime on Motor & 5 Years Comprehensive  
Also available in 75/90 cm

Finish: Black  
Lighting:  
2 x 1.5 W LED  
Oil Collector  
Easy to Clean

EFL 207 HAC LTW VMS 60



Size : 60 cm  
Suction Capacity (Max): 1350 m<sup>3</sup>/h  
Control: 3 Speed Touch with  
Motion Sensor  
Heat Auto Clean Technology  
Warranty : Lifetime on Motor &  
5 Years Comprehensive  
Also available in 90 cm

Finish: Black  
Lighting:  
2 x 1.5 W LED  
Oil Collector  
Easy to Clean

EFL-S 601 ULTRA HAC LTW VMS



Size : 60 cm  
Suction Capacity (Max): 1600 m<sup>3</sup>/h  
Max Air Flow Capacity  
At Outlet : 1500 m<sup>3</sup>/h  
Control: 3 Speed Touch with  
Motion Sensor  
Heat Auto Clean Technology  
Warranty : Lifetime on Motor & 5 Years Comprehensive  
Also available in 75/90 cm

Finish: Black  
Lighting:  
2 x 1.5 W LED  
Oil Collector  
Easy to Clean

EFL-S 108 HAC LTW VMS 60



Size : 60 cm  
Suction Capacity (Max): 1350 m<sup>3</sup>/h  
Control: 3 Speed Touch with  
Palm Sensor  
Heat Auto Clean Technology  
Warranty : Lifetime on Motor &  
Years Comprehensive  
Also available in 90 cm

Finish: Black  
Lighting:  
2 x 1.5 W LED  
Oil Collector  
Easy to Clean



## FILTERLESS/HEAT AUTO CLEAN KITCHENHOODS

**WD TFL HAC MS NERO**



Size: 60/90 cm  
Suction Capacity (Max): 1600m<sup>3</sup>/h  
Max Air Flow Capacity  
At Outlet : 1425 m<sup>3</sup>/h  
Control: 3 Speed Touch with Motion Sensor  
Heat Auto Clean Technology  
Warranty : Lifetime on Motor & 5 Years Comprehensive

Finish: Black  
Lighting:  
2 X 2 W LED  
Oil Collector  
Easy to Clean

**FLCG PLUS LTW 600/900 HAC LTW MS NERO**



Size: 60/90 cm  
Suction Capacity (Max): 1600m<sup>3</sup>/h  
Max Air Flow Capacity  
At Outlet : 1500 m<sup>3</sup>/h  
Control: 3 Speed Touch with Motion Sensor  
Heat Auto Clean Technology  
Warranty : Lifetime on Motor & 5 Years Comprehensive

Finish: Black  
Lighting:  
2 x 2 W LED  
Oil Collector  
Easy to Clean

**WDFL 606/906 HAC LTW MS NERO**



Size: 60/90 cm  
Suction Capacity (Max): 1350m<sup>3</sup>/h  
Max Air Flow Capacity  
At Outlet : 1200 m<sup>3</sup>/h  
Control: 3 Speed Touch with Motion Sensor  
Heat Auto Clean Technology  
Warranty : Lifetime on Motor & 5 Years Comprehensive

Finish: Black  
Concealed Motor  
Lighting:  
2 X 2 W LED  
Oil Collector  
Easy to Clean

**WDFL PLUS HAC LTW 60/90 NERO**



Size: 60 cm  
Suction Capacity (Max): 1600m<sup>3</sup>/h  
Max Air Flow Capacity  
At Outlet : 1500 m<sup>3</sup>/h  
Control: 3 Speed Touch with Motion Sensor  
Heat Auto Clean Technology  
Warranty : Lifetime on Motor & 5 Years Comprehensive  
Also available in 75/90 cm

Finish: Black  
Concealed Motor  
Lighting:  
2 X 2 W LED  
Oil Collector  
Easy to Clean

**FL 600 SPT HAC MS NERO**



Size: 60 cm  
Suction Capacity (Max): 1350 m<sup>3</sup>/h  
Max Air Flow Capacity  
At Outlet : 1200 m<sup>3</sup>/h  
Control: 3 Speed Touch with Motion Sensor  
Heat Auto Clean Technology  
Warranty : 5 Years on Motor & 5 Years Comprehensive  
Also available in 75/90 cm

Finish: Black  
Lighting:  
LED  
Oil Collector  
Easy to Clean  
Concealed Motor

**FL 600 SLIM HAC MS NERO**



Size: 60 cm  
Suction Capacity (Max): 1200 m<sup>3</sup>/h  
Max Air Flow Capacity  
Control: 3 Speed Touch with Motion Sensor  
Heat Auto Clean Technology  
Warranty : 5 Years on Motor & 5 Years Comprehensive  
Also available in 75/90 cm

Finish: Black  
Lighting:  
2 x 2 W LED  
Oil Collector  
Easy to Clean  
Concealed Motor

## HEAT AUTO CLEAN KITCHENHOODS

**WDAT HAC MS NERO**



Size : 60 / 90 cm  
Control: 3 Speed Touch with Motion Sensor  
Suction Capacity (Max): 1200 m<sup>3</sup>/h  
Heat Auto Clean Technology  
Warranty : 5 Years on Motor & 5 Years Comprehensive  
Also available in 75/90

Filter: Baffle  
Finish: Black  
Lighting:  
1 X 1.5 W LED

**WDBF 606/906 HAC LTW MS NERO**



Size : 60/90 cm  
Filter: Baffle  
Suction Capacity (Max): 1200 m<sup>3</sup>/h  
Control: 3 Speed Touch with Motion Sensor  
Heat Auto Clean Technology  
Warranty : Lifetime on Motor & 5 Years Comprehensive

Finish: Black  
Lighting:  
2 X 2 W LED  
Oil Collector  
Easy to Clean

**WD TBF HAC 60 MS NERO**



Size: 60/90 cm  
Baffle Filters  
Suction Capacity (Max): 1500 m<sup>3</sup>/h  
Max Air Flow Capacity  
At Outlet : 1425 m<sup>3</sup>/h  
Control: 3 Speed Touch with Motion Sensor  
Heat Auto Clean Technology  
Warranty : Lifetime on Motor & 5 Years Comprehensive

Finish : Black  
Lighting:  
2 X 2 W LED  
Oil Collector  
Easy to Clean

**BFCG PLUS LTW 600/900 HAC MS NERO**



Size: 60/90 cm  
Filter : Baffle  
Suction Capacity (Max): 1500 m<sup>3</sup>/h  
Control: 3 Speed Touch with Motion Sensor  
Heat Auto Clean Technology,  
Warranty : Lifetime on Motor & 5 Years Comprehensive

Finish: Black  
Lighting:  
2 X 2 W LED  
Oil Collector  
Easy to Clean

**BF 600 SLIM HAC MS NERO**



Size: 60/90 cm  
Filter : Baffle  
Suction Capacity (Max): 1200 m<sup>3</sup>/h  
Control: Control: 3 Speed Touch with Motion Sensor  
Heat Auto Clean Technology,  
Warranty : 5 Years on Motor & 5 Years Comprehensive

Finish: Black  
Lighting:  
2 X 2 W LED  
Oil Collector  
Easy to Clean

# AUTO SENSE KITCHENHOODS



## HANDS-FREE CONVENIENCE AT ITS BEST WITH THE AUTO-SENSE CHIMNEYS.

Auto Sense kitchen hoods turns on automatically when the gas stove is ignited as this product works with the help of thermal sensors fitted inside the hood which senses the burner heat and switches on the kitchen hood. The speed of the kitchen hood can be adjusted with motion sensors or manually by using touch control. The kitchen hood has to be switched off manually using motion sensor or touch control.



**AUTO SENSE EFL 207 HAC LTW VMS 60**



Size : 60 cm  
Suction Capacity (Max): 1350 m<sup>3</sup>/h  
Control: 3 Speed Touch with Motion Sensor  
**Heat Auto Clean Technology (Heat Sensor)**  
Warranty : Lifetime on Motor & 5 Years Comprehensive  
Also available in 90 cm

Finish: Black  
Lighting:  
2 x 1.5 W LED  
Oil Collector  
Easy to Clean

**AUTO SENSE EFL-S 108 HAC LTW VMS 60**



Size : 60 cm  
Suction Capacity (Max): 1350 m<sup>3</sup>/h  
Control: 3 Speed Touch with Palm Sensor  
**Heat Auto Clean Technology (Heat Sensor)**  
Warranty : Lifetime on Motor & 5 Years Comprehensive  
Also available in 90 cm

Finish: Black  
Lighting:  
2 x 1.5 W LED  
Oil Collector  
Easy to Clean

**AUTO SENSE CURVE BF 60 HAC LTW MS NERO**



Size: 60/75/90 cm  
Suction Capacity (Max): 1200 m<sup>3</sup>/h  
Control : 3 Speed Touch with Motion Sensor  
**Heat Auto Clean Technology (Heat Sensor)**  
Warranty : Lifetime on Motor & 5 Years Comprehensive

Finish: Black  
Lighting:  
2 X 2 W LED  
Oil Collector  
Easy to Clean

**AUTO SENSE WDFL 606/906 HAC LTW MS NERO**



Size: 60/90 cm  
Suction Capacity (Max): 1350 m<sup>3</sup>/h  
Max Air Flow Capacity  
At Outlet : 1200 m<sup>3</sup>/h  
Control : 3 Speed Touch with Motion Sensor  
**Heat Auto Clean Technology (Heat Sensor)**  
Warranty : Lifetime on Motor & 5 Years Comprehensive

Finish: Black  
Lighting:  
2 X 2 W LED  
Concealed Motor  
Oil Collector  
Easy to Clean

**AUTO SENSE PRO PLUS FL HAC LTW 60 MS NERO**



Size: 60/90 cm  
Suction Capacity (Max): 1600 m<sup>3</sup>/h  
Max Air Flow Capacity  
At Outlet : 1425 m<sup>3</sup>/h  
Control : 3 Speed Touch with Motion Sensor  
**Heat Auto Clean Technology (Heat Sensor)**  
Warranty : Lifetime on Motor & 5 Years Comprehensive

Finish: Black  
Lighting:  
2 X 1.5 W LED  
Oil Collector  
Easy to Clean



# ETB/BAFFLE FILTER KITCHENHOODS

## ETB WITH BAFFLE FILTER KITCHENHOODS

**METEORITE ETB PLUS LTW T4V LED NERO**



Size : 60/90 cm  
Suction Capacity (Max):  
1220 m<sup>3</sup>/h  
Finish: Black

Filter: 3 Baffle  
Control: Touch T4V  
Lighting: 2 x 2 W LED  
Warranty : Lifetime

**GLACE TRIM ETB PLUS LTW 903 T4V LED**



Size : 90 cm  
Suction Capacity (Max):  
1220 m<sup>3</sup>/h  
Finish: SS with  
Transparent Glass

Filter: 3 Baffle  
Control: Touch T4V  
Lighting: 2 x 1.5 W LED  
Warranty : Lifetime

**GALAXY ETB PLUS LTW T4V LED**



Size : 60 / 90 cm  
Suction Capacity (Max):  
1220 m<sup>3</sup>/h  
Finish: SS + Black Glass  
Warranty : Lifetime

Filter: Baffle  
Control: Touch T4V  
Lighting: 2 x 1.5 W LED

**GLACE SF ETB PLUS LTW 60 NERO**



Size : 60 cm  
Filter: Baffle  
Suction Capacity (Max):  
1220 m<sup>3</sup>/h  
Warranty : Lifetime

Control: Push Button  
Finish: Black  
Lighting: 2 x 1.5 W LED

**GLACE TF TRIM ETB PLUS LTW 60 NERO**



Size : 60 cm  
Suction Capacity (Max):  
1220 m<sup>3</sup>/h  
Control: Touch T4V  
Warranty : Lifetime

Filter: Baffle  
Control: Touch T4V  
Finish: Black  
Lighting: 2 x 2 W LED  
**Also available in SS**

**GLACE TF ETB PLUS LTW 60 NERO**



Size : 60 cm  
Suction Capacity (Max):  
1220 m<sup>3</sup>/h  
Warranty : Lifetime  
**Also available in SS**

Filter: Baffle  
Control: Push Button  
Finish: Black  
Lighting: 2 x 2 W LED

## BAFFLE FILTER KITCHENHOODS

**ESCG BF 60 NERO**



Size : 60 cm  
Filter: Baffle  
Suction Capacity (Max):  
1100 m<sup>3</sup>/h

Control: Push Button  
Finish: Black  
Lighting: 2 x 1.5 W LED

**AH 260 BF**



Size : 60 cm  
Suction Capacity (Max): 1100m<sup>3</sup>/h  
Finish: Stainless Steel/Black

Filter: Baffle  
Control: Push Button  
Lighting: 1 X 2W LED

**STRIP BF 60 NERO**



Size : 60 cm  
Suction Capacity (Max): 880m<sup>3</sup>/h  
**Also available in Stainless Steel Finish**

Filter: Baffle  
Control: Push Button  
Lighting: 1 X 2 W LED  
Finish: Black

**DH 260 BF NERO**



Size : 60 cm  
Suction Capacity (Max): 1200m<sup>3</sup>/h  
Lighting: 1 X 1.5 W LED

Filter: Baffle  
Control: Push Button  
Finish: Black

**STRIP CF 60 NERO**



Size : 60 cm  
Suction Capacity (Max): 880m<sup>3</sup>/h  
**Also available in Stainless Steel Finish**

Filter: Cassette  
Control: Push Button  
Lighting: 1 X 2 W LED  
Finish: Black

**FS 301**



Size : 60 cm  
Suction Capacity (Max): 710m<sup>3</sup>/h  
Lighting: Incandescent  
**Also available in Black Finish**

Filter: Baffle  
Control: Push Button  
Finish: Stainless Steel

**CBF 602**



Size : 60 cm  
Suction Capacity (Max): 670m<sup>3</sup>/h  
Lighting: 1 x 2 W LED  
**Also available in Black Finish**

Filter: Baffle  
Control: Push Button  
Finish: Stainless Steel

**TNT 602 TOUCH BK**



Size : 60 cm  
Suction Capacity (Max): 670m<sup>3</sup>/h  
Lighting: 2 x 1.5 W LED

Filter: Baffle  
Control: Touch  
Finish: Black

 **ALSO AVAILABLE IN ISLAND**

# DFS (DIRECT FLAME) PROTECT FB SERIES



## DFS SERIES

DFS FB MFC 3B 70 DX



Built In Hob - 3 Burner 70 cm  
Auto Electric Ignition  
Round Metallic Designer Knobs  
Full Brass Heavy Duty Direct Multi-flame burners  
Fully Sealed Burner Cups with Vertical Injector  
Cast Iron Pan Support with Heat Guard  
Burners Powers - 4.3 kW x 2, 2.9 kW x 1  
Product Size cm (WxDXH) 70 x 52.5 x 12.3  
Cutting Size cm (WxDXH) 64.5 x 47.5 x 5.5

Also available with Flame Failure Safety Device (FFD)

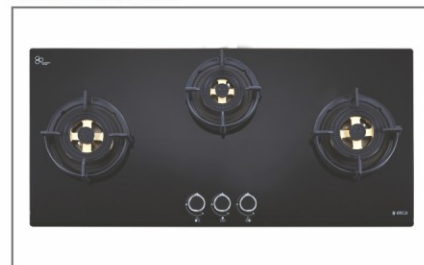
DFS FB MFC 4B 70



Built In Hob - 4 Burner 70 cm  
Auto Electric Ignition  
Round Metallic Designer Knobs  
Full Brass Heavy Duty Direct Multi-flame burners  
Fully Sealed Burner Cups with Vertical Injector  
Cast Iron Pan Support with Heat Guard  
Burners Powers -  
4.3 kW x 1, 3.5 kW x 1, 2.9 kW x 1, 1.7 kW x 1  
Product Size cm (WxDXH) 70 x 52.5 x 12.3  
Cutting Size cm (WxDXH) 64.5 x 47.5 x 5.5

Also available with Flame Failure Safety Device (FFD)  
Above hob also available with 2 MFC DF Burner (DX)  
Burners Powers - 4.3 kW x 2, 2.9 kW x 2

DFS FB MFC 3B 90 DX



Built In Hob - 3 Burner 90 cm  
Auto Electric Ignition  
Round Metallic Designer Knobs  
Full Brass Heavy Duty Direct Multi-flame burners  
Fully Sealed Burner Cups with Vertical Injector  
Cast Iron Pan Support with Heat Guard  
Burners Powers - 4.3 kW x 2, 2.9 kW x 1  
Product Size cm (WxDXH) 90 x 42.5 x 12.3  
Cutting Size cm (WxDXH) 86 x 38.5 x 5.5

Also available with Flame Failure Safety Device (FFD)



# DFS (DIRECT FLAME) PROTECT FB SERIES

## DFS SERIES

### DFS FB MFC 4B 91



Built In Hob - 4 Burner 90 cm  
Auto Electric Ignition  
Round Metallic Designer Knobs  
Full Brass Heavy Duty Direct Multi-flame burners  
Fully Sealed Burner Cups with Vertical Injector  
Cast Iron Pan Support with Heat Guard  
Burners Powers -  
4.3 kW x 1, 3.5 kW x 1, 2.9 kW x 1, 1.7 kW x 1  
Product Size cm (WxDXH) 90 x 52.5 x 12.3  
Cutting Size cm (WxDXH) 79.5 x 48.5 x 5.5

Also available with Flame Failure Safety Device (FFD)  
Above hob also available with 2 MFC DF Burner (DX)  
Burners Powers - 4.3 kW x 2, 2.9 kW x 2

## DFS SERIES FLEXI

### FLEXI DFS FB 3B 75 DX



Flexi Hob-Top - 3 Burner 75 cm  
Auto Ignition (Battery Operated)  
Round Metallic Designer Knobs  
Full Brass Heavy Duty Direct Multi-flame burners  
Fully Sealed Burner Cups with Vertical Injector  
Cast Iron Pan Support with Heat Guard  
Burners Powers - 3.5 kW x 1, 2.9 kW x 1, 1.7 kW x 1  
Product Size cm (WxDXH) 75 x 45 x 10.6  
Cutting Size cm (WxDXH) 71.5 x 41.4 x 5

### FLEXI DFS FB 4B 70/91 TX



Flexi Hob-Top - 4 Burner 70/90 cm  
Auto Ignition (Battery Operated)  
Round Metallic Designer Knobs  
Full Brass Heavy Duty Direct Multi-flame burners  
Fully Sealed Burner Cups with Vertical Injector  
Cast Iron Pan Support with Heat Guard  
Burners Powers - 3.5 kW x 2, 2.9 kW x 1, 1.7 kW x 1  
Product Size cm (WxDXH) 70 x 52 x 10.6  
Cutting Size cm (WxDXH) 66 x 48 x 5

Also available in 90 cm  
Product Size cm (WxDXH) 90 x 52.5 x 12  
Cutting Size cm (WxDXH) 86 x 48.5 x 5.5

## DFS (DIRECT FLAME) PROTECT FB DUAL TONE SERIES

### FLEXI DFS FB 375 DX DUAL TONE



Flexi Hob-Top - 3 Burner 75 cm  
Auto Ignition (Battery Operated)  
Round Metallic Designer Knobs  
Full Brass Heavy Duty Direct Multi-flame burners,  
Fully Sealed Burner Cups with Vertical Injector  
Dual Tone Toughened Glass  
Cast Iron Pan Support with Heat Guard  
Burners Powers - 3.5 kW x 1, 2.9 kW x 1, 1.7 kW x 1  
Product Size cm (WxDxH) 75 x 45 x 10.6  
Cutting Size cm (WxDxH) 71.5 x 41.4 x 5

### FLEXI DFS FB 470 DX DUAL TONE



Flexi Hob-Top - 4 Burner 70 cm  
Auto Ignition (Battery Operated)  
Round Metallic Designer Knobs  
Full Brass Heavy Duty Direct Multi-flame burners,  
Fully Sealed Burner Cups with Vertical Injector  
Dual Tone Toughened Glass  
Cast Iron Pan Support with Heat Guard  
Burners Powers - 3.5 kW x 2, 1.7 kW x 2  
Product Size cm (WxDxH) 70 x 52 x 10.6  
Cutting Size cm (WxDxH) 66 x 48 x 5

### FLEXI DFS FB 490 DX DUAL TONE



Flexi Hob-Top - 4 Burner 90 cm  
Auto Ignition (Battery Operated)  
Round Metallic Designer Knobs  
Full Brass Heavy Duty Direct Multi-flame burners,  
Fully Sealed Burner Cups with Vertical Injector  
Dual Tone Toughened Glass  
Cast Iron Pan Support with Heat Guard  
Burners Powers - 3.5 kW x 2, 1.7 kW x 2  
Product Size cm (WxDxH) 90 x 52.5 x 12  
Cutting Size cm (WxDxH) 86 x 48.5 x 5.5

## DFS IND FLEXI SERIES

### IND FLEXI FB 375 DX DFS



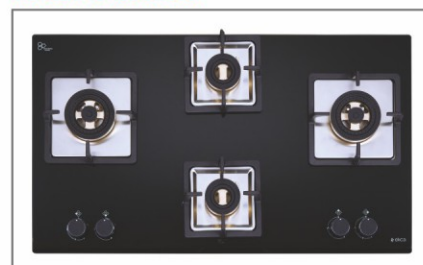
Flexi Hob-Top - 3 Burner 75 cm  
Auto Ignition (Battery Operated)  
Black Toughened Glass  
Round Metallic Knobs  
Full Brass Heavy Duty Direct Multi-flame burners  
Fully Sealed Burner Cups with Vertical Injector  
Cast Iron Pan Support  
Burners Power: 2.9 kW x 2, 1.7 kW x 1  
Product dimension cm (WxDXH) 75 x 45 x 10.6  
Cutting dimension cm (WxDXH) 71.5 x 41.4 x 5

### IND FLEXI FB 470 DX DFS



Flexi Hob-Top - 4 Burner 70 cm  
Auto Ignition (Battery Operated)  
Black Toughened Glass  
Round Metallic Knobs  
Full Brass Heavy Duty Direct Multi-flame burners  
Fully Sealed Burner Cups with Vertical Injector  
Cast Iron Pan Support  
Burners Power: 2.9 kW x 2, 1.7 kW x 2  
Product dimension cm (WxDXH) 70 x 52 x 10.6  
Cutting dimension cm (WxDXH) 66 x 48 x 5

### IND FLEXI FB 491 DX DFS



Flexi Hob-Top - 4 Burner 90 cm  
Auto Ignition (Battery Operated)  
Black Toughened Glass  
Round Metallic Knobs  
Full Brass Heavy Duty Direct Multi-flame burners  
Fully Sealed Burner Cups with Vertical Injector  
Cast Iron Pan Support  
Burners Power: 2.9 kW x 2, 1.7 kW x 2  
Product dimension cm (WxDXH) 90 x 52.5 x 12  
Cutting dimension cm (WxDXH) 86 x 48.5 x 5.5

# DFS (DIRECT FLAME) PROTECT AB SERIES

## DFS AB SERIES FLEXI HOB-TOP

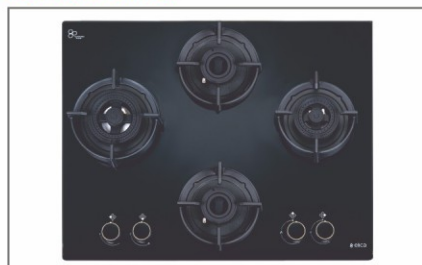


### FLEXI DFS AB 3B 75 DX



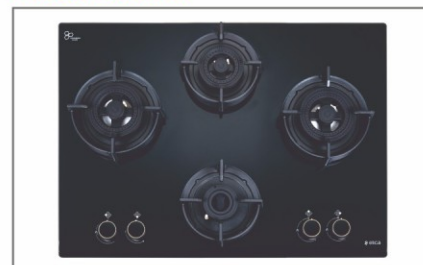
Flexi Hob-Top - 3 Burner 75 cm  
Auto Ignition (Battery Operated)  
Round Metallic Knobs  
**Brass Heavy Duty Direct Multi-flame burners**  
**Fully Sealed Burner Cups with Vertical Injector**  
**Cast Iron Pan Support with Heat Guard**  
Burners Powers - 3.5 kW x 1, 2.9 kW x 1, 1.7 kW x 1  
Product Size cm (WXDXH) 75 x 45 x 10.6  
Cutting Size cm (WXDXH) 71.5 x 41.4 x 5

### FLEXI DFS AB 4B 60 DX



Flexi Hob-Top - 4 Burner 60 cm  
Auto Ignition (Battery Operated)  
Round Metallic Knobs  
**Brass Heavy Duty Direct Multi-flame burners**  
**Fully Sealed Burner Cups with Vertical Injector**  
**Cast Iron Pan Support with Heat Guard**  
Burners Powers - 3.5 kW x 1, 2.9 kW x 1, 1.7 kW x 2  
Product Size: cm (WXDXH) 60 x 52.5 x 10.6  
Cutting Size: cm (WXDXH) 56.4 x 49.5 x 5

### FLEXI DFS AB 4B 70 TX



Flexi Hob-Top - 4 Burner 70 cm  
Auto Ignition (Battery Operated)  
Round Metallic Knobs  
**Brass Heavy Duty Direct Multi-flame burners**  
**Fully Sealed Burner Cups with Vertical Injector**  
**Cast Iron Pan Support with Heat Guard**  
Burners Powers - 3.5 kW x 2, 2.9 kW x 1, 1.7 kW x 1  
Product Size cm (WXDXH) 70 x 52 x 10.6  
Cutting Size cm (WXDXH) 66 x 48 x 5



## DFS AB SERIES FLEXI HOB-TOP

### FLEXI DFS AB 4B 91 TX



Flexi Hob-Top - 4 Burner 90 cm  
Auto Ignition (Battery Operated)  
Round Metallic Knobs  
**Brass Heavy Duty Direct Multi-flame burners**  
**Fully Sealed Burner Cups with Vertical Injector**  
**Cast Iron Pan Support with Heat Guard**  
Burners Powers - 3.5 kW x 2, 2.9 kW x 1, 1.7 kW x 1  
Product Size cm (WDXH) 90 x 52.5 x 12  
Cutting Size cm (WDXH) 86 x 48.5 x 5.5



DFS AB SERIES

## DFS IND FLEXI AB SERIES

### IND FLEXI AB 375 DX DFS



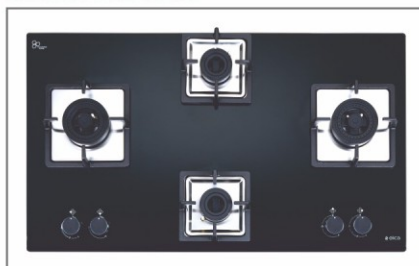
Flexi Hob-Top - 3 Burner 75 cm  
Auto Ignition (Battery Operated)  
Round Metallic Knobs  
**Brass Heavy Duty Direct Multi-flame burners**  
**Fully Sealed Burner Cups with Vertical Injector**  
**Cast Iron Pan Support**  
Burners Powers - 2.9 kW x 2, 1.7 kW x 1  
Product dimension cm (WDXH) 75 x 45 x 10.6  
Cutting dimension cm (WDXH) 71.5 x 41.4 x 5

### IND FLEXI AB 470 DX DFS



Flexi Hob-Top - 4 Burner 70 cm  
Auto Ignition (Battery Operated)  
Round Metallic Knobs  
**Brass Heavy Duty Direct Multi-flame burners**  
**Fully Sealed Burner Cups with Vertical Injector**  
**Cast Iron Pan Support**  
Burners Powers - 2.9 kW x 2, 1.7 kW x 2  
Product dimension cm (WDXH) 70 x 52 x 10.6  
Cutting dimension cm (WDXH) 66 x 48 x 5

### IND FLEXI AB 491 DX DFS



Flexi Hob-Top - 4 Burner 90 cm  
Auto Ignition (Battery Operated)  
Round Metallic Knobs  
**Brass Heavy Duty Direct Multi-flame burners**  
**Fully Sealed Burner Cups with Vertical Injector**  
**Cast Iron Pan Support**  
Burners Powers - 2.9 kW x 2, 1.7 kW x 2  
Product dimension cm (WDXH) 90 x 52.5 x 12  
Cutting dimension cm (WDXH) 86 x 48.5 x 5.5



DFS IND AB SERIES

## DFS PRO AB SERIES

### FLEXI DFS PRO AB 3B 75 DX



Flexi Hob-Top - 3 Burner 75 cm  
Auto Ignition (Battery Operated)  
Round Metallic Knobs  
**Brass Heavy Duty Direct Multi-flame burners**  
**Fully Sealed Burner Cups with Vertical Injector**  
**Cast Iron Pan Support**  
Burners Powers - 3.5 kW x 2, 1.7 kW x 1  
Product Size cm (WDXH) 75 x 45 x 10.6  
Cutting Size cm (WDXH) 71.5 x 41.4 x 5

### FLEXI DFS PRO AB 4B 70 DX



Flexi Hob-Top - 4 Burner 70 cm  
Auto Ignition (Battery Operated)  
Round Metallic Knobs  
**Brass Heavy Duty Direct Multi-flame burners**  
**Fully Sealed Burner Cups with Vertical Injector**  
**Cast Iron Pan Support**  
Burners Powers - 3.5 kW x 2, 2.9 kW x 1, 1.7 kW x 1  
Product Size cm (WDXH) 70 x 52 x 10.6  
Cutting Size cm (WDXH) 66 x 48 x 5

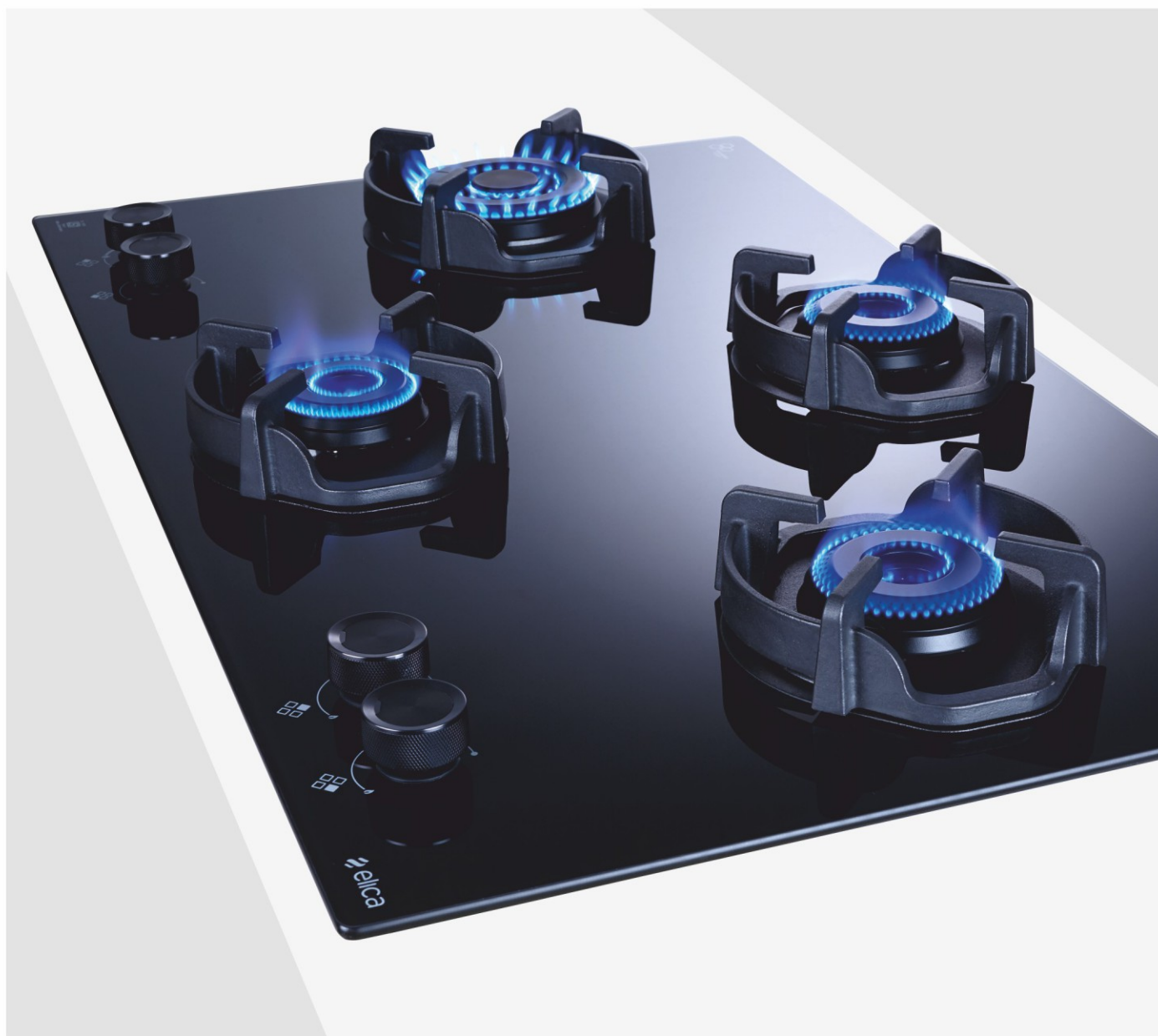
### FLEXI DFS PRO AB 4B 91 DX



Flexi Hob-Top - 4 Burner 90 cm  
Auto Ignition (Battery Operated)  
Round Metallic Knobs  
**Brass Heavy Duty Direct Multi-flame burners**  
**Fully Sealed Burner Cups with Vertical Injector**  
**Cast Iron Pan Support**  
Burners Powers - 3.5 kW x 2, 2.9 kW x 1, 1.7 kW x 1  
Product Size cm (WDXH) 90 x 52.5 x 12.3  
Cutting Size cm (WDXH) 86 x 48.5 x 5.5

Above models are also available with Full Brass Burners

# HEXA IND LOTUS SERIES



## HEXA IND LOTUS SERIES

### FLEXI HEXA 360 LOTUS IND HD BRASS



Flexi Hob-Top - 3 Burner 60 cm  
 Black Toughened Glass  
 Auto Ignition (Battery Operated)  
 Round Metallic Knobs  
**Brass Heavy Duty large burner with Triple Ring flame Direct Multi-Flame Burners**  
 Cast Iron Pan Support with Heat Guard  
**Burners Powers :** 4 kW x 1, 2.5 kW x 1, 1.7 kW x 1  
 Product dimension cm (w x d x h) – 60 x 52.5 x 12  
 Cutting dimension cm (w x d x h) – 56.5 x 47.5 x 5.5

### FLEXI HEXA 370 LOTUS IND HD BRASS



Flexi Hob-Top - 3 Burner 70 cm  
 Black Toughened Glass  
 Auto Ignition (Battery Operated)  
 Round Metallic Knobs  
**Brass Heavy Duty large burner with Triple Ring flame Direct Multi-Flame Burners**  
 Cast Iron Pan Support with Heat Guard  
**Burners Powers :** 4 kW x 1, 2.5 kW x 1, 1.7 kW x 1  
 Product dimension cm (w x d x h) – 70 x 52 x 12  
 Cutting dimension cm (w x d x h) – 66.5 x 48.5 x 5.5

### FLEXI HEXA 460 LOTUS IND HD BRASS



Flexi Hob-Top - 4 Burner 60 cm  
 Black Toughened Glass  
 Auto Ignition (Battery Operated)  
 Round Metallic Knobs  
**Brass Heavy Duty large burner with Triple Ring flame Direct Multi-Flame Burners**  
 Cast Iron Pan Support with Heat Guard  
**Burners Powers :** 4 kW x 1, 2.5 kW x 1, 1.7 kW x 2  
 Product dimension cm (w x d x h) – 60 x 52 x 12  
 Cutting dimension cm (w x d x h) – 56.5 x 47.5 x 5.5



## HEXA IND LOTUS SERIES

### FLEXI HEXA 470 LOTUS IND HD BRASS



Flexi Hob-Top - 4 Burner 70 cm  
 Black Toughened Glass  
 Auto Ignition (Battery Operated)  
 Round Metallic Knobs  
**Brass Heavy Duty large burner with Triple Ring flame**  
**Direct Multi-Flame Burners**  
 Cast Iron Pan Support with Heat Guard  
**Burners Powers :** 4 kW x 1, 2.5 kW x 2, 1.7 kW x 1  
 Product dimension cm (w x d x h) – 70 x 52 x 12  
 Cutting dimension cm (w x d x h) – 66.5 x 48.5 x 5.5

### FLEXI HEXA 491 LOTUS IND HD BRASS



Flexi Hob-Top - 4 Burner 90 cm  
 Black Toughened Glass  
 Auto Ignition (Battery Operated)  
 Round Metallic Knobs  
**Brass Heavy Duty large burner with Triple Ring flame**  
**Direct Multi-Flame Burners**  
 Cast Iron Pan Support with Heat Guard  
**Burners Powers :** 4 kW x 1, 2.5 kW x 2, 1.7 kW x 1  
 Product dimension cm (w x d x h) – 90 x 52.5 x 12  
 Cutting dimension cm (w x d x h) – 86 x 48.5 x 5.5

### FLEXI HEXA 475 RS LOTUS IND HD BRASS



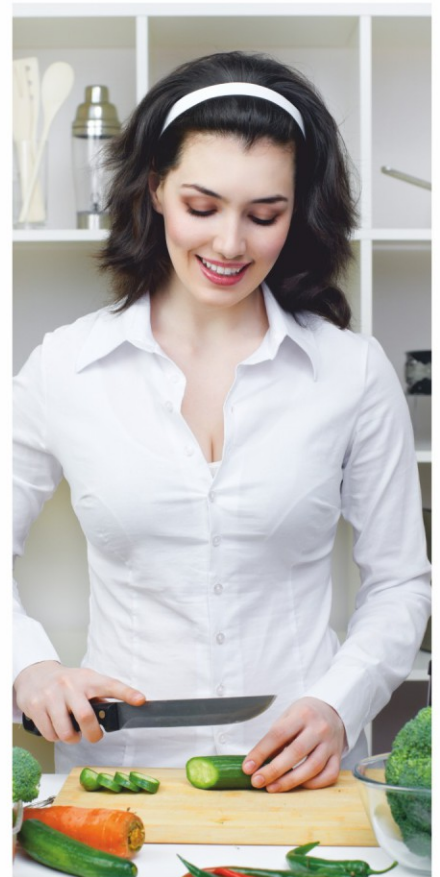
Flexi Hob-Top - 4 Burner 75 cm  
 Black Toughened Glass  
 Auto Ignition (Battery Operated)  
 Round Metallic Knobs  
**Brass Heavy Duty large burner with Triple Ring flame**  
**Direct Multi-Flame Burners**  
 Cast Iron Pan Support with Heat Guard  
**Burners Powers :** 2.5 kW x 2, 1.7 kW x 2  
 Product dimension cm (w x d x h) – 75 x 52.5 x 12  
 Cutting dimension cm (w x d x h) – 71 x 48.5 x 5.5



◀ Cast Iron Pan Support with Heat Guard



◀ Brass Heavy Duty Large burner with Triple Ring flame & 4kW Power  
 ◀ Lifetime Warranty\* on burners



◀ Round Metallic Knobs

\*Lifetime Warranty is of 10 years. Only burner deformation is covered under warranty. discoloration and normal wear & tear is not covered under warranty.



# LOTUS IND HD SERIES



## LOTUS SERIES FLEXI HOB-TOP

### FLEXI 375 LOTUS IND HD BRASS



Flexi Hob-Top - 3 Burner 75 cm  
Auto Ignition (Battery Operated)  
Round Metal Knobs  
Brass Heavy Duty Direct Multi-flame burners  
Cast Iron Pan Support with Heat Guard  
Brass Burners : 2.5 kW x 2, 1.7 kW x 1  
Product Size cm (WXDXH) 75 x 45 x 10.6  
Cutting Size cm (WXDXH) 71.5 x 41.4 x 5

### FLEXI 360 LOTUS IND HD BRASS



Flexi Hob-Top - 3 Burner 60 cm  
Auto Ignition (Battery Operated)  
Round Metal Knobs  
Brass Heavy Duty Direct Multi-flame burners  
Cast Iron Pan Support with Heat Guard  
Brass Burners : 2.5 kW x 2, 1.7 kW x 1  
Product Size cm (WXDXH) 60 x 52.5 x 10.6  
Cutting Size cm (WXDXH) 56.4 x 49.5 x 5

### FLEXI 460 LOTUS IND HD BRASS



Flexi Hob-Top - 4 Burner 60 cm  
Auto Ignition (Battery Operated)  
Round Metal Knobs  
Brass Heavy Duty Direct Multi-flame burners  
Cast Iron Pan Support with Heat Guard  
Brass Burners : 2.5 kW x 2, 1.7 kW x 2  
Product Size cm (WXDXH) 60 x 52.5 x 10.6  
Cutting Size cm (WXDXH) 56.4 x 49.5 x 5

### FLEXI 470 LOTUS IND HD BRASS



Flexi Hob-Top - 4 Burner 70 cm  
Auto Ignition (Battery Operated)  
Round Metal Knobs  
Brass Heavy Duty Direct Multi-flame burners  
Cast Iron Pan Support with Heat Guard  
Brass Burners : 2.5 kW x 2, 1.7 kW x 2  
Product Size cm (WXDXH) 70 x 52 x 10.6  
Cutting Size cm (WXDXH) 66 x 48.5 x 5  
Also available in Built-in Version with AC Auto Ignition  
Product Size cm (WXDXH) 70 x 52 x 10.6  
Cutting Size cm (WXDXH) 56.4 x 48.5 x 5

### FLEXI 491 LOTUS IND HD BRASS



Flexi Hob-Top - 4 Burner 90 cm  
Auto Ignition (Battery Operated)  
Round Metal Knobs  
Brass Heavy Duty Direct Multi-flame burners  
Cast Iron Pan Support with Heat Guard  
Brass Burners : 2.5 kW x 2, 1.7 kW x 2  
Product Size cm (WXDXH) 90 x 52.5 x 12  
Cutting Size cm (WXDXH) 86 x 48.5 x 5.5



## FLEXI LOTUS SERIES

### FLEXI HCT 375 DX LOTUS BK



FLEXI Hob -Top- 3 Burner 75 cm  
Auto Ignition (Battery Operated),  
Enameled Coated Burners  
Grids - Cast Iron  
Round Metal Knobs  
Burners Powers : 2.5 kW x 2, 1.7 kW x 1  
Product Size cm (WxDxH) 75 x 45 x 10.6  
Cutting Size cm (WxDxH) 71.5 x 41.4 x 5

### FLEXI HCT 470 DX LOTUS BK



FLEXI Hob -Top- 4 Burner 70 cm  
Auto Ignition (Battery Operated),  
Enameled Coated Burners  
Grids - Cast Iron  
Round Metal Knobs  
Burners Powers- 2.5 kW x 2, 1.7 kW x 2  
Product Size cm (WxDxH) 70 x 52 x 10.6  
Cutting Size cm (WxDxH) 66 x 48 x 5

### FLEXI HCT 360 DX LOTUS BK



FLEXI Hob -Top- 3 Burner 60 cm  
Auto Ignition (Battery Operated),  
Enameled Coated Burners  
Grids - Cast Iron  
Round Metal Knobs  
Burners Powers : 2.5 kW x 2, 1.7 kW x 1  
Product Size cm (WxDxH) 60 x 52.5 x 10.6  
Cutting Size cm (WxDxH) 56.4 x 49.5 x 5

### FLEXI HCT 460 DX LOTUS BK



FLEXI Hob -Top- 4 Burner 60 cm  
Auto Ignition (Battery Operated),  
Enameled Coated Burners  
Grids - Cast Iron  
Round Metal Knobs  
Burners Powers- 2.5 kW x 2, 1.7 kW x 2  
Product Size cm (WxDxH) 60 x 52 x 10.6  
Cutting Size cm (WxDxH) 56.4 x 49.5 x 5

### FLEXI HCT 375 DX LOTUS BRASS



FLEXI Hob -Top- 3 Burner 75 cm  
Brass Burners  
Grids - Cast Iron  
Round Metal Knobs  
Auto ignition (battery operated)  
Burners Powers : 2.5 kW x 2, 1.7 kW x 1  
Product Size cm (WxDxH) 75 x 45 x 10.6  
Cutting Size cm (WxDxH) 71.5 x 41.4 x 5

### FLEXI HCT 470 DX LOTUS BRASS



FLEXI Hob -Top- 4 Burner 70 cm  
Brass Burners  
Grids - Cast Iron  
Round Metal knobs  
Auto ignition (battery operated)  
Burners Powers- 2.5 kW x 2, 1.7 kW x 2  
Product Size cm (WxDxH) 70 x 52 x 10.6  
Cutting Size cm (WxDxH) 66 x 48 x 5

## FLEXI AB HCT DUAL TONE SERIES

### FLEXI AB HCT 375 DX DUAL TONE



Flexi Hob-Top - 3 Burner 75 cm  
Auto Ignition (Battery Operated),  
Advanced Brass Burners  
**Dual Tone Toughened Glass**  
Grids - Cast Iron, Round Metallic Knobs  
Burners Powers- 2.9 kW x 2, 1.7 kW x 1  
Product Size cm (W x D x H) 75 x 45 x 10.6  
Cutting Size cm (W x D x H) 71.5 x 41.4 x 5

## FLEXI LOTUS DUAL TONE SERIES

### FLEXI HCT 375 DX LOTUS BK DUAL TONE



FLEXI Hob -Top- 3 Burner 75 cm  
Enameled Coated Burners  
Grids - Cast Iron,  
**Dual Tone Toughened Glass**  
Round Mettalic Knobs  
Burners Powers : 2.5 kW x 2, 1.7 kW x 1  
Product Size cm (WxDxH) 75 x 45 x 10.6  
Cutting Size cm (WxDxH) 71.5 x 41.4 x 5

### FLEXI HCT 470 DX LOTUS BK DUAL TONE



FLEXI Hob -Top- 4 Burner 70 cm  
Enameled Coated Burners  
Grids - Cast Iron  
**Dual Tone Toughened Glass**  
Round Mettalic Knobs  
Burners Powers- 2.5 kW x 2, 1.7 kW x 2  
Product Size cm (WxDxH) 70 x 52 x 10.6  
Cutting Size cm (WxDxH) 66 x 48 x 5

### FLEXI AB HCT 470 DX DUAL TONE



Flexi Hob-Top - 4 Burner 70 cm  
Auto Ignition (Battery Operated),  
Advanced Brass Burners  
**Dual Tone Toughened Glass**  
Grids - Cast Iron, Round Metallic Knobs  
Burners Powers- 2.9 kW x 2, 1.7 kW x 2  
Product Size cm (W x D x H) 70 x 52 x 10.6  
Cutting Size cm (W x D x H) 66 x 48 x 5







**INOX PRO FB MFC 3B 75 DX FFD**



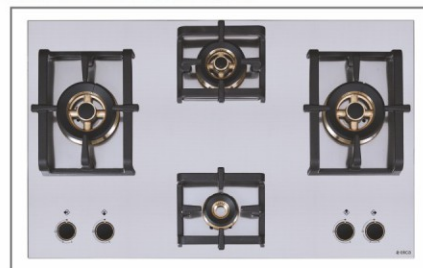
Built In Stainless Steel Hob  
3 Burner 75 cm  
Auto Electric Ignition,  
Round Mettalic Knobs  
Full Brass Heavy Duty Multi-flame burners  
Flame Failure Safety Device (FFD)  
Ignition Plug with Brass Sleeve  
Burners Powers : 4.0 kW x 2 , 1.7 kW x 1  
Product Size cm (WXDXH) 75 x 45 x 12.3  
Cutting Size cm (WXDXH) 71.0 x 41.0 x 5.5

**INOX PRO FB MFC 4B 70 DX FFD**



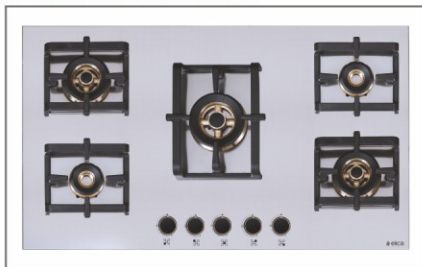
Built In Stainless Steel Hob  
4 Burner 70 cm  
Auto Electric Ignition,  
Round Mettalic Knobs  
Full Brass Heavy Duty Multi-flame burners  
Flame Failure Safety Device (FFD)  
Ignition Plug with Brass Sleeve  
Burners Powers : 4.0 kW x 2 , 1.7 kW x 2  
Product Size cm (WXDXH) 70 x 52.5 x 12.3  
Cutting Size cm (WXDXH) 64.5 x 47.5 x 5.5

**INOX PRO FB MFC 4B 91 DX FFD**



Built In Stainless Steel Hob  
4 Burner 90 cm  
Auto Electric Ignition,  
Round Mettalic Knobs  
Full Brass Heavy Duty Multi-flame burners  
Flame Failure Safety Device (FFD)  
Ignition Plug with Brass Sleeve  
Burners Powers : 4.0 kW x 2 , 2.9 kW x 1 , 1.7 kW x 1  
Product Size cm (WXDXH) 90 x 52.5 x 12.3  
Cutting Size cm (WXDXH) 79.5 x 48.5 x 5.5

**INOX PRO FB MFC 5B 90 MT FFD**



Built In Stainless Steel Hob  
5 Burner 90 cm  
Auto Electric Ignition,  
Round Mettalic Knobs  
Full Brass Heavy Duty Multi-flame burners  
Flame Failure Safety Device (FFD)  
Ignition Plug with Brass Sleeve  
Burners Powers : 4.0 kW x 1 , 2.9 kW x 2 , 1.7 kW x 2  
Product Size cm (WXDXH) 90 x 52.5 x 12.3  
Cutting Size cm (WXDXH) 79.5 x 48.5 x 5.5

Above models are also available without  
Flame Failure Device (FFD)



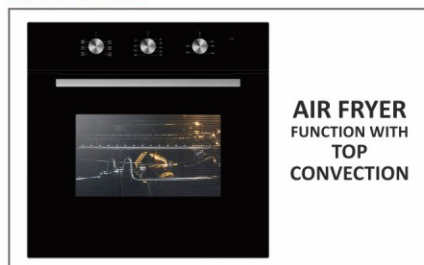


# BUILT-IN OVENS



## MECHANICAL CONTROL

### EPBI AF 760 MMF



**AIR FRYER  
FUNCTION WITH  
TOP  
CONVECTION**

**60 cm Built in Electric Oven with Air Fryer function with top convection fan**

Oven capacity: 58 L, Drop down door,  
Three rotary controls,  
Functions Knob, Timer Knob, Temperature Knob  
Air Fryer Function, Defrost, Maximum power: 2.05 kW  
Energy Efficiency class – A, 7 cooking functions  
Easy to clean internal enameled cavity, Top Cooling Fan  
Default temperature & adjustable up to 250°, Oven lamp  
Product dimensions: (w x d x h) 59.5 x 42.1 x 59.5 cm  
Carcase dimensions: (w x d x h) 56 x 57 x 59 cm

### EPBI 880 MMF



**60 cm Multifunction Built in Electric Oven with Convection.**

Drop down door with front black glass finish  
**Oven Capacity 80 L**  
Maximum power: 2100 W • Energy efficiency class – A  
Convection fan, Easy to clean internal enameled cavity  
Top cooling fan, Halogen lamp, **Hydro clean function**  
Default temperature & adjustable up to 250° C  
Electronic clock timer with reminder function  
3 level adjustable universal pan & wire shelf  
Product dimensions cm : (WxDxH) 59.5 x 57.5 x 59.5  
Carcase dimensions cm : (WxDxH) 56 x 57 x 59

### EPBI 680 MMF



**60 cm Multifunction Built in Electric Oven**  
Drop down door with front black glass finish  
**Oven Capacity 80 L**

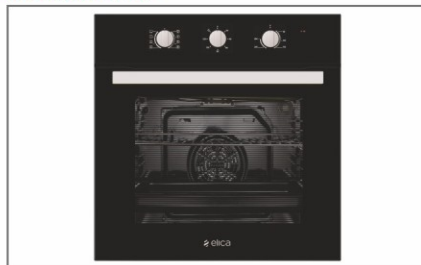
Maximum power: 2100 watts, • Energy efficiency class – A  
Easy to clean internal enameled cavity  
Top cooling fan, Halogen lamp, **Hydro clean function**  
Default temperature & adjustable up to 250° C  
Electronic clock timer with reminder function  
3 level adjustable universal pan, 3 level adjustable wire shelf  
Product dimensions cm : (WxDxH) 59.5 x 57.5 x 59.5  
Carcase dimensions cm : (WxDxH) 56 x 57 x 59

### EPBI 861 MMF / EPBI 961 MMF



**60 cm Multifunction Built in Electric Oven**  
with Convection, Energy Class A,  
Oven Capacity 80 L, 8 cooking functions,  
Mechanical Rotary Control Knobs,  
Easy to clean Enamel Interior Cavity  
Product Dimension cm : (WxDxH) 59.5 x 57.5 x 59.5  
Carcase Dimension cm : (WxDxH) 56.0 x 57.0 x 59  
**Roteisserie available only on EPBI 961 MMF**

### EPBI 865/965 MMF



**60 cm Multifunction Built in Electric Oven with Convection,**  
Oven Capacity 78 L, Knobs, 8 cooking functions,  
Energy Class A, Mechanical Rotary Control,  
Easy to clean, Enamel Interior Cavity,  
5 level adjustable universal pan & wire shelf  
Product Dimension cm : (WxDxH) 59.5 x 57.5 x 59.5  
Carcase Dimension cm : (WxDxH) 56 x 57 x 59  
**Roteisserie & 9 cooking functions available only in EPBI 965 MMF**

### EPBI INOX NERO 962 MMF



**60 cm Multifunction Built in Electric Oven**  
with Convection & Roteisserie (manual),  
Drop down with front black stainless steel finish  
Energy Class A, Oven Capacity 82 L,  
Mechanical Rotary Control Knobs  
8 cooking functions, Easy to clean Enamel Interior Cavity  
Product Dimension cm : (WxDxH) 59.5 x 54.7 x 59.6  
Carcase Dimension cm : (WxDxH) 56 x 57 x 59

## TOUCH CONTROL

EPBI 1161 MTC BK



60 cm Multifunction Built in Electric Oven with Convection & Roteisserie, Energy Class A, Oven Capacity 80 L, 12 cooking functions, Capacitive touch control with LED display, Easy to clean Enamel Interior Cavity, Product Dimension cm : (WxDxH) 59.5 x 57.5 x 59.5, Carcase size cm : (WxDxH) 56 x 57 x 59

EPBI INOX NERO 1164 TOUCH



60 cm Multifunction Built in Electric Oven with Convection & Roteisserie (manual), Enregy Class A+, Oven Capacity 82 L, 11 cooking Functions, Capacitive Touch Control with LED Display, Easy to Clean Enamel Interior Cavity, Product Dimension cm : (WxDxH) 59.5 X 56.5 X 59.5, Carcase Dimension cm : (WxDxH) 56 X 56 X 60

EPBI 1167 MTC BK



60 cm Multifunction Built in Electric Oven with Convection & Manual Rotisserie, Drop down door with front black glass finish, Capacitive touch control with LED display, Energy Class A, Oven Capacity 80 L, 11 cooking functions, Top cooling fan, Easy to clean Enamel Interior Cavity, Default temperature & adjustable up to 250° C, Halogen lamp, Child lock function, Electronic clock timer with reminder function, **Sabbath mode function**, Product dimensions cm : (WxDxH) 59.5 x 57.5 x 59.5, Carcase dimensions cm : (WxDxH) 56 x 57 x 59

## DIGITALCONTROL

EPBI 1060 DMF



60 cm Multifunction Built in Electric Oven with Convection & Roteisserie, Energy Class A, Oven Capacity 80 L, 11 cooking functions, Electronic pop up rotary control with LED, display, Easy to clean Enamel Interior Cavity, Product Dimension cm : (WxDxH) 59.5 x 57.5 x 59.5, Carcase Dimension cm : (WxDxH) 56 x 57 x 59

EPBI 1064 DMF



60 cm Multifunction Built in Electric Oven with Convection & Roteisserie, Energy Class A, Oven Capacity 80 L, 11 cooking functions, Electronic pop up rotary control with LED display, Child lock function, Easy to clean Enamel Interior Cavity, Product Dimension cm : (WxDxH) 59.5 x 57.5 x 59.5, Carcase Dimension cm : (WxDxH) 56 x 57 x 59

EPBI COMBO STEAM OVEN 390



60 cm Multifunction Built in Oven with Steam, Energy Efficiency Class - A, Oven Capacity 39 L, Fan Grill, Steam function, Convection, Grill, Child Lock function, Defrost, 1 L Water Tank, Convection Plus Steam, 48 Auto menu, Electronic Clock, Combine Cooking Type, Cooking End Signal, Overheat Protection, Short-Circuit Protection, Product Dimension cm : (WxDxH) 59.5 x 52.5 x 45.4, Carcase Dimension cm : (WxDxH) 56 x 55 x 45

EPBI 1063



60 cm Multifunction Built in Electric Oven with Convection & Roteisserie, Energy Class A, Oven Capacity 80 L, 11 cooking functions, Electronic pop up rotary control with LED display, Easy to clean Enamel Interior Cavity, Product Dimension cm : (WxDxH) 59.5 x 57.5 x 59.5, Carcase Dimension cm : (WxDxH) 56 x 57 x 59

EPBI 1062 TRIM DMF



60 cm Multifunction Built in Electric Oven with Convection & Roteisserie, Energy Class A, Oven Capacity 82 L, 10 cooking functions, Electronic pop up rotary control with LED display, Easy to clean Enamel Interior Cavity, Product Dimension cm : (WxDxH) 59.5 x 57.5 x 59.5, Carcase Dimension cm : (WxDxH) 56 x 57 x 59





# BUILT-IN MICROWAVE OVENS

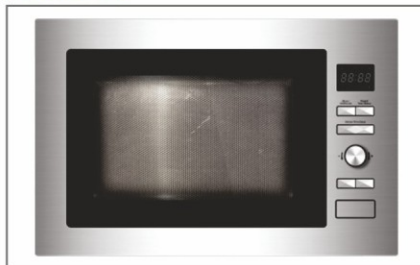
## MICROWAVE + GRILL

### EPBI MW 220



Built In Microwave with Grill  
Electronic control with LED display, Oven Capacity 22 L  
8 Auto cooking programs, 5 Microwave Power Levels  
24.5 cm glass turntable, Child Lock function  
Product Dimensions cm : (WxDxH) 59.4 x 34.35 x 38.8  
Carcase Dimensions cm : (WxDxH) 56.4 x 35 x 38

### EPBI MWO G25



Built-in Microwave with Grill Electronic Control with LED Display, Oven Capacity : 25 L, Kitchen Timer, 8 Auto cooking programs, Multistage Cooking, Clock, 31.5 cm Glass Turn Table with Grill Rack, Child Safety Lock Defrost by Weight/TiAdd 30 Sec., Cooking End Signal, Product Dimensions cm : (WxDxH) 59.5 x 40 x 38.8  
Cutout Dimensions cm : (WxDxH) 56.4 x 50 x 38

### EPBI MWO G28 TOUCH



Built In Microwave with Grill Capacitive touch control with LED display, Oven Capacity 28 L,  
8 Auto cooking programs, 5 Microwave Power Levels  
Child Lock function, 31.5 cm glass turntable,  
Product Dimensions cm : (WxDxH) 59.5 x 40.1 x 38.8  
Carcase Dimensions cm : (WxDxH) 56.4 x 50 x 38

### EPBI MWO G25 INOX NERO



Built In Microwave with Grill, Capacitive touch control with LED display, Oven Capacity 25 L, Touch to Open  
8 Auto cooking programs, 5 Microwave Power Levels  
24.5 cm glass turntable, Child Lock function  
Product Dimensions cm : (WxDxH) 59.5 x 40.1 x 38.8  
Carcase Dimensions cm : (WxDxH) 56.4 x 50 x 38



Built In Microwave with Grill  
Touch control with LED display  
Oven Capacity 22 L, Timer, Multistage Cooking,  
Defrost, Add 30 Sec Cooking End Signal, Child Lock function  
Product Dimensions cm : (WxDxH) 59.5 x 40.1 x 38.8  
Carcase Dimensions cm : (WxDxH) 56.4 x 50 x 38

### EPBI MWO 360 DD



Built In Microwave with Drop Down Door Microwave + Grill,  
Touch control with LED display, oven capacity: 36 L  
Full stainless steel cavity, **8 Auto cooking programs**,  
Speed cooking, 5 Microwave Power Levels, Combination  
Cooking, Glass turntable, Timer, Multistage cooking,  
Defrost by time & weight, Child Lock function  
Product Dimensions cm : (WxDxH) 59.5 x 45.6 x 38.2  
Carcase Dimensions cm : (WxDxH) 56 x 55 x 38

## MICROWAVE + GRILL + CONVECTION

### EPBI MW 250



Built In Microwave with Grill and convection,  
Energy Efficiency class - A, Oven Capacity 25 L,  
Electronic control with LED display  
10 Auto cooking programs, 5 Microwave Power Levels  
31.5 cm glass turntable, Child Lock function  
Product Dimensions cm : (WxDxH) 59.4 x 47 x 38.8  
Carcase Dimensions cm : (WxDxH) 56.4 x 55 x 38

### EPBI MW 340



Built In Microwave with Grill and convection, Energy  
Efficiency class - A, Oven Capacity 34 L  
Electronic control with LED display  
10 Auto cooking programs, 5 Microwave Power Levels  
31.5 cm glass turntable, Child Lock function  
Product Dimensions cm : (WxDxH) 59.5 x 46.75 x 38.8  
Carcase Dimensions cm : (WxDxH) 55 x 55 x 38

### EPBI MWO 280 TOUCH BK/WHITE



Built In Microwave with Grill and convection,  
Energy Efficiency class - A, Oven Capacity 28 L  
Capacitive touch control with LED display,  
10 Auto cooking programs, 5 Microwave Power Levels  
31.5 cm glass turntable, Child Lock function  
Product Dimensions cm : (WxDxH) 59.5 x 47 x 38.8  
Carcase Dimensions cm : (WxDxH) 56.4 x 55 x 38



## COMBO OVEN + MICROWAVE



**EPBI COMBO OVEN 50L**



60 cms Multifunction Built in Electric Combination Oven, Energy Efficiency class - A, Oven Capacity 50 L, Child Lock function, 13 Auto preset programs, Two rotary pop-up knobs with 4 soft touch electronic controls with LED display, Grill combi with convection, 5 Microwave Power Levels, 36 cm glass turntable, Easy to clean internal SS cavity  
Product Dimension cm : (WxDxH) 59.5 x 57 x 45.5  
Carcase Dimension cm : (WxDxH) 56.5 x 56 x 45.5

**EPBI COMBO OVEN TRIM 44L**



60 cms Multifunction Built in Electric Combination Oven, Energy Efficiency class - A, Oven Capacity 44 L, Electronic pop up rotary control with LED display, 3D cooking function, 13 Auto preset programs, 5 Microwave Power Levels, Child Lock function 36 cm glass turntable, Easy to clean internal SS cavity  
Product Dimension cm : (WxDxH) 59.5 x 57 x 45.5  
Carcase Dimension cm : (WxDxH) 56.5 x 56 x 45.5

## COMBI PAIRS OF OVEN & MWO



EPBI MWO 360 DD  
+  
EPBI 1167 MTC BK

EPBI MWO G25 INOX NERO  
+  
EPBI 1164 MTC INOX NERO

EPBI MWO G28 TOUCH  
+  
EPBI 861 MMF/EPBI 961 MMF

EPBI MWO 280 TOUCH BK  
+  
EPBI 1161 BK

EPBI MW G25  
+  
EPBI 1063

EPBI COMBO OVEN TRIM 44 L  
+  
EPBI 1062 TRIM DMF

## WARMER DRAWER



**EPBI WD 22L VETRO BK**

Food Warming and Defrosting, 5 Temperature Setting Level, Load Bearing - 25kg Max, Interior Volume - 22 L, 14 cm high Warming Drawer Capacitive Touch Control, Cavity - Stainless Steel, Temperature Range - 40-80° C  
Product Size cm (W x D x H) - 59.5 x 54.1 x 14.1  
Carcase Size cm (W x D x H) - 56 x 56 x 14.6



# WINE COOLERS



WINE COOLER - EWC 92S



Built-in Wine Cooler, Energy Efficiency class - A  
Voltage / Frequency - 220-240V / 50Hz  
U V protected reversible glass door  
Capacitive touch control blue colour LED display.  
Storage bottles (750 ml) -36N  
Dual Zone with individual adjustment  
Temperature Range upper/lower zone - 5-22 C  
Temperature display, Type of Refrigerant - R600a/25g  
Noise level - 41 dBA, Frost free, Wooden Shelf - 3  
Gross weight (kg) - 37.30, Net Weight (kg) - 33.2  
Dimension cm (w x d x h) -59 x 56.3 x 59.5  
Carcase Dimension cm (w x d x h) -56.8 x 56 x 59  
Energy consumption per year (kW) - 140

WINE COOLER - EWC 145 S



Free Standing Wine Cooler, Energy Efficiency class - A  
Voltage / Frequency - 220-240V / 50Hz  
U V protected reversible glass door  
Capacitive touch control blue colour LED display.  
Storage bottles (750 ml) -46N  
Dual Zone with individual adjustment  
Temperature Range upper/lower zone - 5-22 C  
Temperature display, Type of Refrigerant - R600a/35g  
Noise level - 43 dBA, Frost free, Wooden Shelf - 5  
Gross weight (kg) - 55.89, Net Weight (kg) - 43.9  
Dimension cm (w x d x h) - 59.5 x 57 x 82  
Carcase Dimension cm (w x d x h) - 60 x 57.5 x 82.5  
Energy consumption per year (kW) - 146

# INDUCTION HOB



WITH NO OPEN FLAMES,  
YOUR KITCHEN IS CLOSED TO RIS

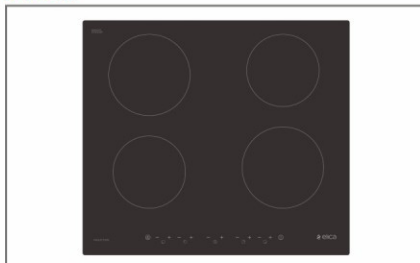
There are no open flames and the hob heats up only when there's a vessel kept on the glass surface. When the pot is placed on the induction zone, this magnetic field transfers heat directly to the cooking pan, and only the pot gets heated. If there's no contact with a pot, the heating stops automatically.

EIH 22 30



2 Cooking Zones  
Supply Voltage - 220-240 V  
Installed Electric Power- 3500 W  
Touch Controls, Timer Control, Child Lock  
9 Stage Power Setting  
Pan Sensor,  
Residual Heat Indicators  
Automatic Safety Switch off  
Product Size cm (WxDxH) 28.8 x 52 x 5.6  
Cutting Size cm (WxDxH) 26.8 x 50 x 6

EIH 4Z 60



4 Cooking Zones  
Supply Voltage - 220-240 V, Touch Controls,  
Installed Electric Power - 6400 - 7200 W,  
Pan Sensor, Timer Control, Child Lock,  
9 Stage Power Setting,  
Automatic Safety Switch off  
Residual Heat Indicators  
Product Size cm (WxDxH) 59 x 52 x 6  
Cutting Size cm (WxDxH) 56 x 49 x 6.5

# COOKING RANGES



**F 9502 XGRH**



Free standing cooking range, 2 triple ring, one rapid, One semi rapid & one auxiliary burner, Oven capacity 110 L Control with safety device Oven and grill with thermostatic valve, Timer, oven lamp, Rotessrie to heat the food uniformly From all sides, cast iron grids, Top hob & front with 304 Stainless steel, Full auto ignition,  
Accessories: Wire rack, wok grill & enamelled tray  
Product Size cm (WXDXH) : 90 x 61 x 85.5

**F 3402 WGVH SS**



Free standing cooking range  
One rapid, two semi rapid & one auxiliary burner,  
Single pcs gas oven cavity for better performance,  
Oven capacity 52 L, Oven and grill with thermostatic valve control with safety device, Timer, oven lamp, Enemelled grids, Top hob and front with 304 stainless steel, Push button auto ignition  
Accessories: oven wire grid & enamelled tray  
Product Size cm (WXDXH) : 50 x 55 x 85.5

**F 3402 NGRB BK**



Free standing cooking range  
One rapid, two semi rapid & one auxiliary burner,  
Single pcs gas oven cavity for better performance,  
Oven capacity 52 L, Oven and grill with thermostatic valve control with safety device, Enemelled grids, Top hob and front with 304 stinless steel  
Accessories: oven wire grid & enamelled tray  
Product Size cm (WXDXH) : 50 x 55 x 85.5

**F 6402 ZGRH**



Free standing cooking range, 1 triple ring, two semi rapid & One auxiliary burner, Single pcs oven cavity for better performance, Oven capacity 54 L, Oven and grill with thermostatic valve control with safety device, Rotessrie to heat the food uniformly from all sides, Timer, oven lamp, Enemelled grids, Top hob and front with 304 stainless steel, Push button auto ignition  
Accessories: wire rack, wok grill & enamelled tray  
Product Size cm (WXDXH) : 60 x 63 x 85.5

# DISHWASHERS



**WQP 12 - 7605V SS**



60 cm Free Standing Dishwasher  
Soft Touch Electronic Control, 2 LED displays (top for operating & front LED display for monitoring wash cycle) 5, Wash Programmes, 12 Plate Settings, Half Load, Hidden Heating Element, Pocket Handle  
Product Dimensions cm (WxDxH) 59.8 x 60 x 84.5

**WQP 12 - 7735 HR**



60 cm Semi Built In Dishwasher  
Soft Touch LED Control, 3 Layer Cutlery Drawer, Half Load, Pocket Handle, 14 Plate Settings, 6 Wash Programmes, Delay Timer : 3/6/9/12 Hours, Hidden Heating Element  
Product Dimensions cm (WxDxH) 59.8 x 57 x 81.5  
Carcase Dimensions cm (WxDxH) 60 x 58 x 82

**WQP 12 - 7711**



60 cm Built In Dishwasher  
Soft Touch Electronic Control, 6 Wash Programmes, 12 Plate Settings, Delay Timer : 3/6/9 HOURS, Half Load, Hidden Heating Element  
Product Dimensions cm (WxDxH) 59.8 x 55 x 81.5  
Carcase Dimensions cm (WxDxH) 60 x 58 x 82

**WQP 12 - 7713 M**

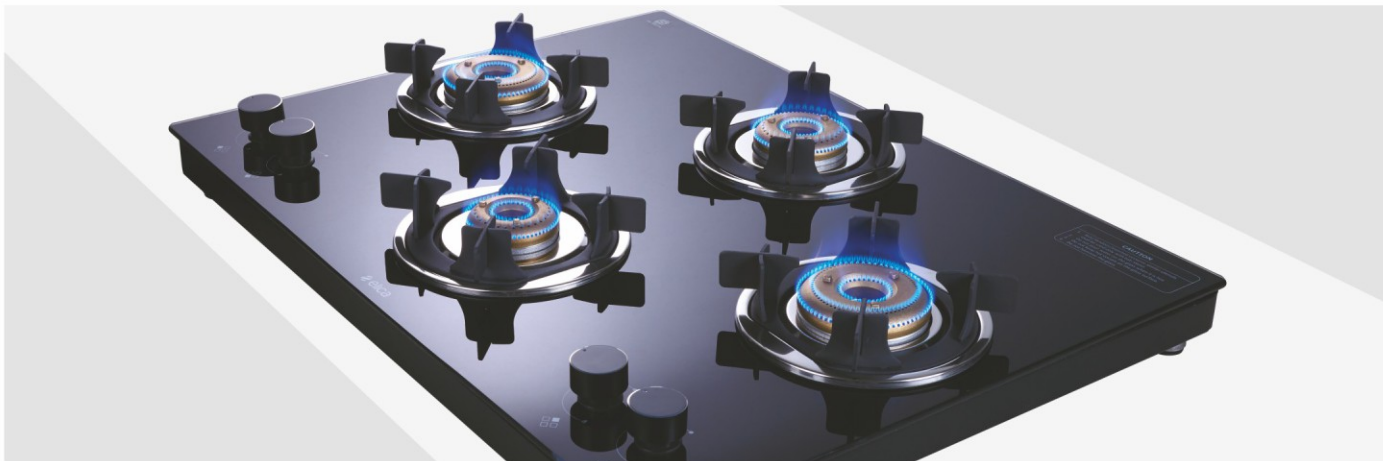


60 cm Built In Dishwasher  
Soft Touch LED Control with LED Display, 14 Plate Settings 8 Wash Programmes, 3 Layer Cutlery Drawer, 24 hrs Delay start, Half Load, Hidden, Heating Element  
Product Dimensions cm (WxDxH) 59.8 x 60 x 81.5  
Carcase Dimensions cm (WxDxH) 60 x 55 x 81.5



# COOKTOPS

## TOP KNOB SERIES



773 CT VETRO (TKN CROWN DT SERIES)



Top knob Glass Cooktop - 3 Burner 75 cm  
Forged Brass Burner, Ultra Slim Frame  
Burners - 1 Jumbo, 1 Medium, 1 Small  
Crown Shape Enameled Coated Pan Support  
Round Metallic Knob, European Gas Valves  
Toughened Glass  
Product Size cm (WxDxH) 75 x 45.5 x 10.6

694 CT VETRO 2J (TKN CROWN DT SERIES)



Top knob Glass Cooktop - 4 Burner 70 cm  
Forged Brass Burner, Ultra Slim Frame  
Burners - 2 Jumbo, 1 Medium, 1 Small  
Crown Shape Enameled Coated Pan Support  
Round Metallic Knob, European Gas Valves  
Toughened Glass  
Product Size cm (WxDxH) 70 x 56 x 10.6

904 CT VETRO 2J (TKN CROWN DT SERIES)



Top knob Glass Cooktop- 4 Burner 88 cm  
Forged Brass Burner, Ultra Slim Frame  
Burners - 2 Jumbo, 1 Medium, 1 Small  
Crown Shape Enameled Coated Pan Support  
Round Metallic Knob, European Gas Valves  
Toughened Glass  
Product Size cm (WxDxH) 88 x 52.5 x 10.6



FORGED BRASS BURNER



TOUGHENED GLASS



CROWN SHAPE ENAMELED  
COATED PAN SUPPORT



ROUND METALLIC KNOBS



DOUBLE DRIP TRAY

Above cooktops are also  
available with Auto-Ignition  
(Battery Operated)

## SLIMLINE SPF SERIES



773 CT VETRO (SLIMLINE SPF)



Slim Line SPF Glass Cooktop, 3 Burners 77 cm  
Heavy Duty Forged Brass Burners  
Burners: 1 Jumbo, 1 Medium, 1 Small  
Black Toughened Glass, Ultra Slim Frame  
Grids: Square Eurocoated  
Product Size cm (WxDxH) 77 x 47 x 10.6

694 CT VETRO (SLIMLINE SPF)



Slim Line SPF Glass Cooktop, 4 Burners 69 cm  
Heavy Duty Forged Brass Burners  
Burners: 2 Jumbo, 1 Medium, 1 Small  
Black Toughened Glass, Ultra Slim Frame,  
Grids: Square Eurocoated  
Product Size cm (WxDxH) 69 x 55 x 10.6



ULTRA SLIM  
FRAME

SLIMLINE SPF SERIES FRAME

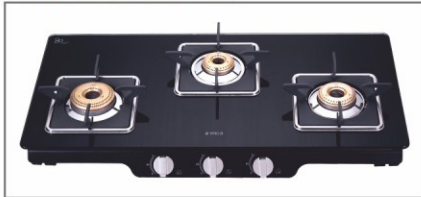


FORGED BRASS BURNER

# COOKTOPS

## PATIO SPF SERIES

### PATIO ICT 773 BLK (SPF SERIES)



Glass Cooktop with Jumbo Burner, 3 Burners 77 cm  
Heavy Duty Forged Brass Burners  
Burners: 1 Jumbo, 1 Medium, 1 Small  
Black Toughened Glass, Ultra Slim Frame, Grids: Square,  
Product Size cm (WxDxH) 77 x 47 x 11.9

### PATIO ICT 469 BLK S (SPF SERIES)



Glass Cooktop with Jumbo Burner, 4 Burners 69 cm  
Heavy Duty Forged Brass Burners  
Burners: 2 Jumbo, 1 Medium, 1 Small  
Black Toughened Glass, Ultra Slim Frame, Grids: Square  
Product Size cm (WxDxH) 69 x 57 x 11.9



FORGED BRASS BURNER

Above cooktops are also available with Auto-Ignition (Battery Operated)

## DT (DOUBLE DRIP TRAY) SERIES

### 773 CT VETRO (DT SERIES)



DT Glass Cooktop 3 Burners 77 cm  
Burners - 1 Jumbo 1 Medium, 1 Small  
Grids - Round Eurocoated  
Product Size cm (WxDxH) 77 x 47 x 13.4

### 694 CT VETRO (DT SERIES)



DT Glass Cooktop 4 Burners 69 cm  
Burners - 1 Jumbo 1 Medium, 2 Small  
Grids - Round Eurocoated  
Product Size cm (WxDxH) 69 x 57 x 13.4

### 594 CT VETRO 1J (DT SERIES)



DT Glass Cooktop 4 Burners 59 cm  
Burners - 1 Jumbo 1 Medium, 2 Small  
Grids - Round Eurocoated  
Product Size cm (WxDxH) 58.5 x 50 x 13.4

### 774 CT VETRO BK 2J (DT SERIES)



Glass Glass Cooktop 4 Burners 77 cm with  
Low Depth & Double Drip Tray  
Burners - 2 Jumbo 1 Medium, 1 Small  
Grids - Round Eurocoated  
Product Size cm (WxDxH) 77 x 45 x 13.4

### PATIO ICT 469 BLK S (DT SERIES)



DT Glass Glass Cooktop,  
4 Burners 60 cm  
Burners - 1 Large, 1 Medium, 2 Small  
Grids - Round Eurocoated  
Product Size cm (WxDxH) 69 x 57 x 13.4

## DOUBLE DRIP TRAY ASSEMBLY

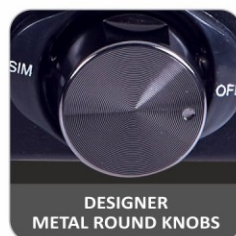


Above DT Series cooktops are also available with Auto-Ignition (Battery Operated)





## CREST SERIES



### CREST 266 NERO



**Forged Brass Burners** Glass Cooktop - 2 Burner 60 cm  
Burners - 1 Medium, 1 Small  
**Euro Coated Crown Design Pan Support,**  
Toughened Glass, Designer Metal Knobs  
**Black finish Drip Tray**  
Product Size cm (WxDxH) - 66 x 34 x 13.6

### CREST 370 J NERO



**Forged Brass Burners** Glass Cooktop - 3 Burner 70 cm  
Burners - 1 Jumbo, 1 Medium, 1 Small  
**Euro Coated Crown Design Pan Support,**  
Toughened Glass, Designer Metal Knobs  
**Black finish Drip Tray**  
Product Size cm (WxDxH) 70 x 41 x 13.6

### CREST 460 J NERO



**Forged Brass Burners** Glass Cooktop - 4 Burner 60 cm  
Burners - 1 Jumbo, 1 Medium, 2 Small  
**Euro Coated Crown Design Pan Support,**  
Toughened Glass, Designer Metal Knobs  
**Black finish Drip Tray**  
Product Size cm (WxDxH) 59 x 56 x 13.6

## VETRO SERIES

### 662 CT VETRO



Glass Cooktop , 2 Burners 66 cm  
Burners - 1 Medium, 1 Small  
Grids - Round Eurocoated  
Product Size cm (WxDxH) 66 x 34 x 13.2

### 703 CT VETRO BK/SS



Glass Cooktop, 3 Burners 70 cm  
Burners - 2 Medium, 1 Small  
Grids - Round Eurocoated  
Product Size cm (WxDxH) 70 x 41 x 13.2

### 594 CT VETRO BK



Glass Cooktop, 4 Burners 60 cm  
Burners - 2 Medium, 2 Small  
Grids - Round Eurocoated  
Product Size cm (WxDxH) 58.5 x 56 x 13.2

## INOX (STAINLESS STEEL) SERIES

### INOX 753 SS



Stainless Steel Cooktop, 3 Burners 75 cm  
Burners - 1 Large, 1 Medium, 1 Small  
Grids - Round Eurocoated  
Product Size cm (WxDxH) 73 x 45 x 13.5

### INOX 604 SS



Stainless Steel Cooktop, 4 Burners 60 cm  
Burners - 2 Medium, 2 Small  
Grids - Round Eurocoated  
Product Size cm (WxDxH) 59 x 50 x 13.5  
Also available with Jumbo Burner

### INOX 713 SB



Stainless Steel Cooktop  
3 Burners 70 cm  
Burners - 1 Large, 1 Medium, 1 Small  
Grids - Round Power Coated  
Product Size cm (WxDxH) 70 x 41.5 x 13.5





**Elica PB Whirlpool Kitchen Appliances Private Limited**

37/1/1, Kondhwa Pisoli Road, Pisoli, Pune - 4110 60.  
Maharashtra. India | Telephone: 1800 233 0007

website : [www.elicaindia.com](http://www.elicaindia.com)



ElicaIndia



ElicaIndia



Elica\_India



ElicaHiLife