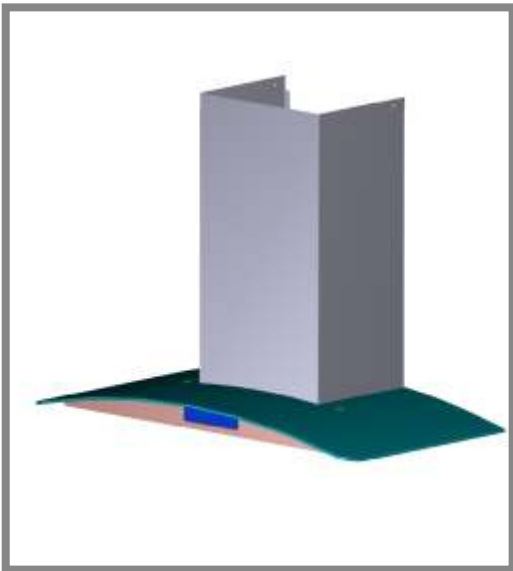
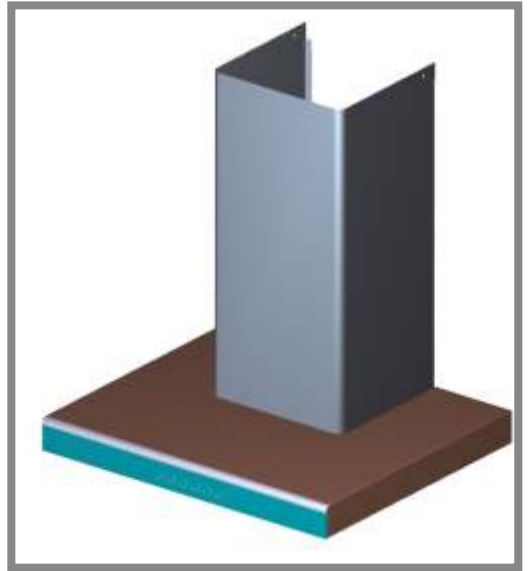
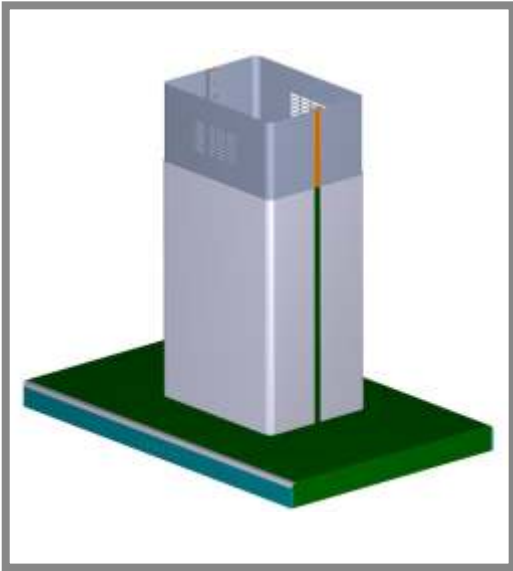
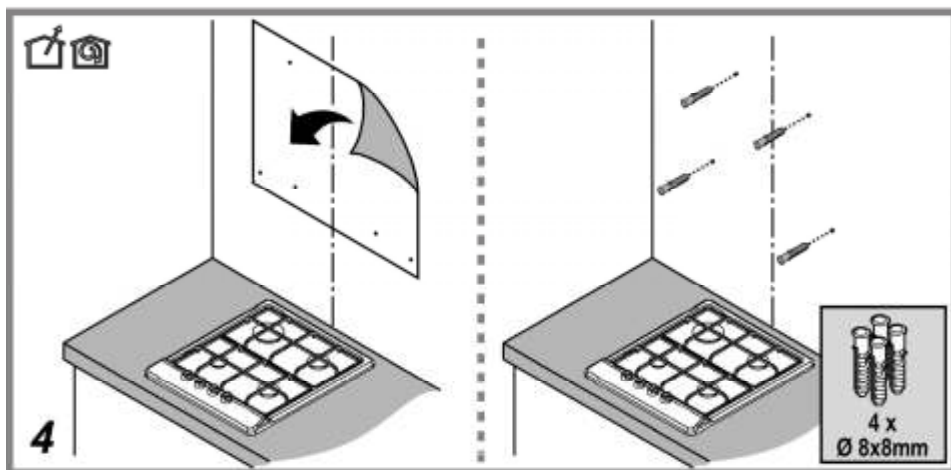
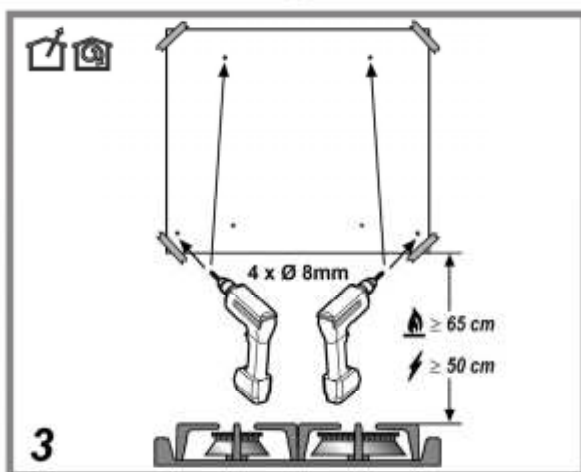
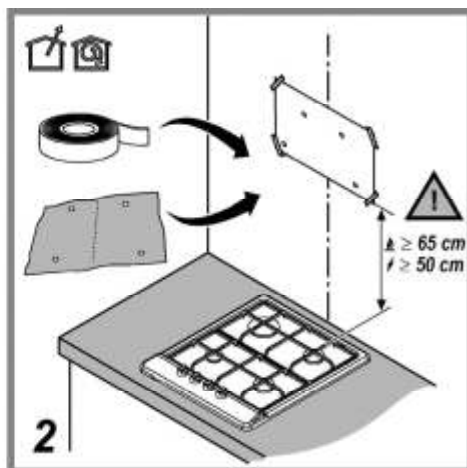
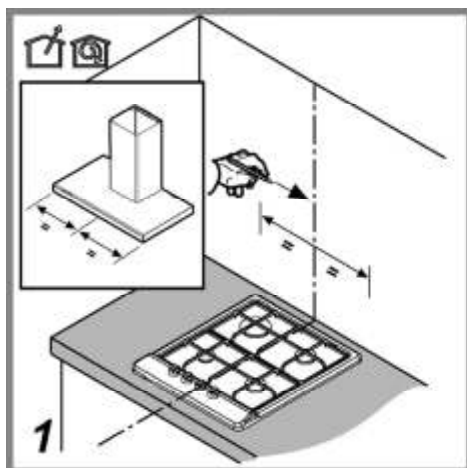
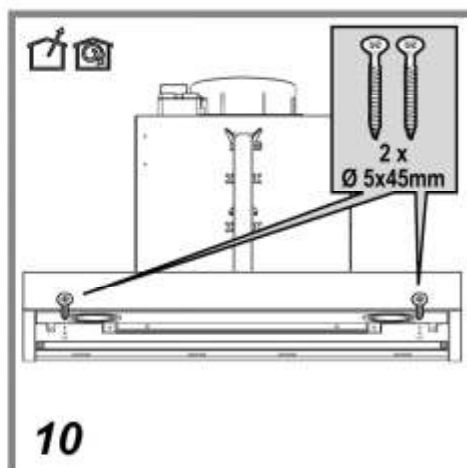
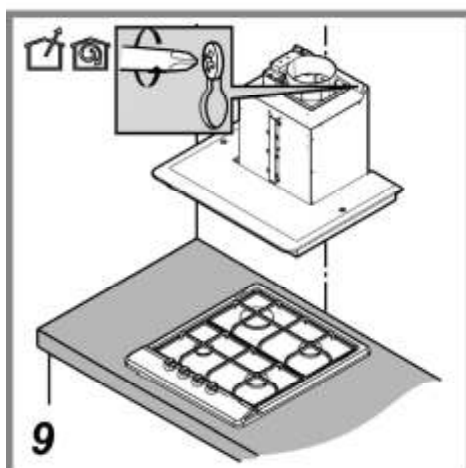
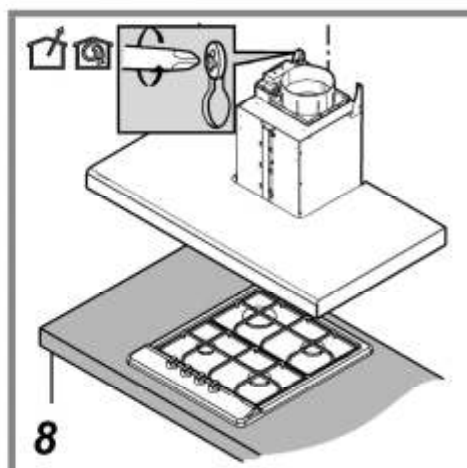
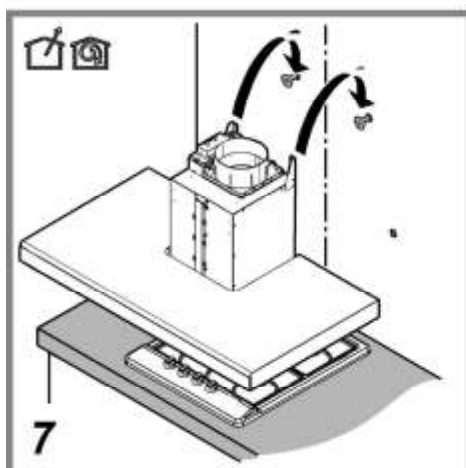
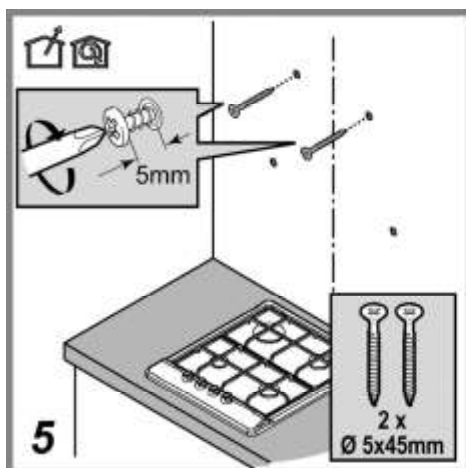


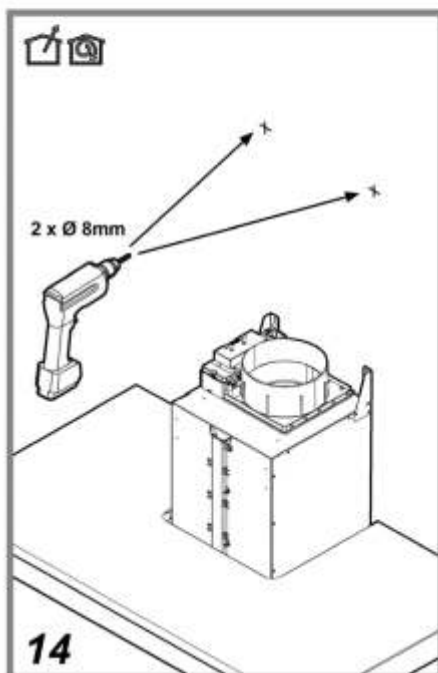
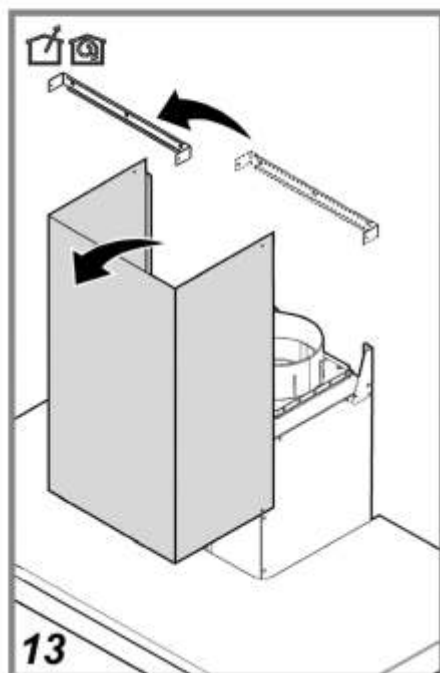
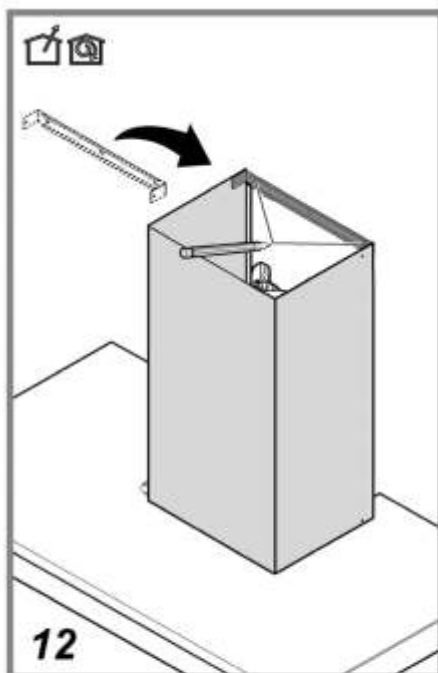
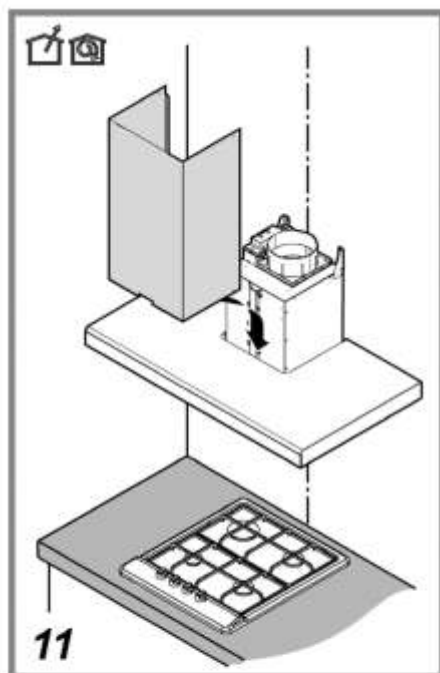


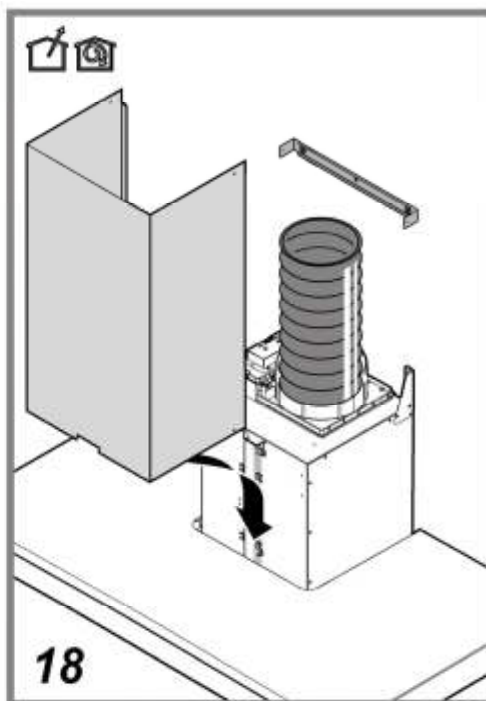
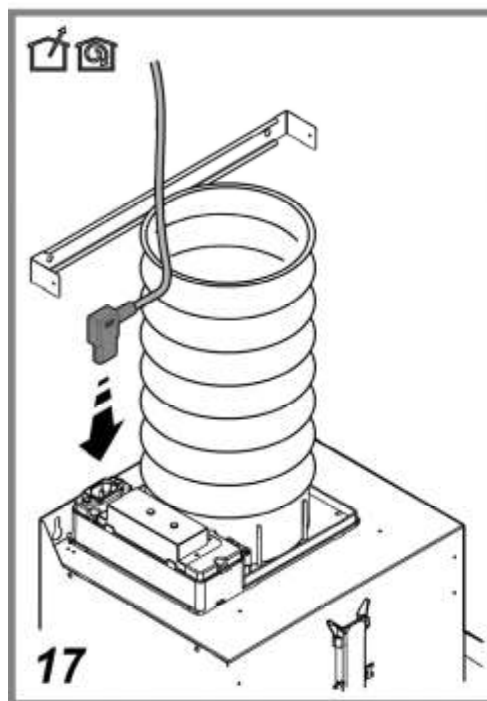
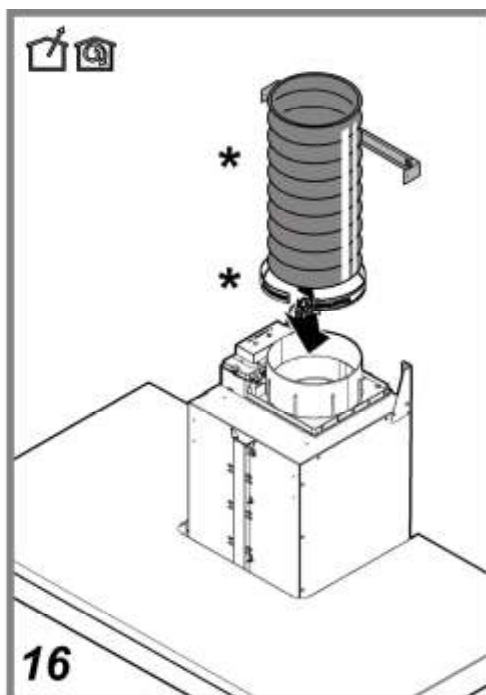
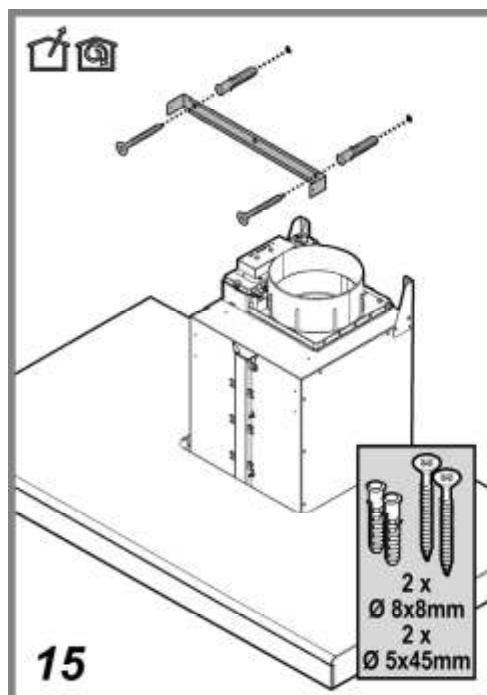
Kitchen Chimneys
Instruction Manual

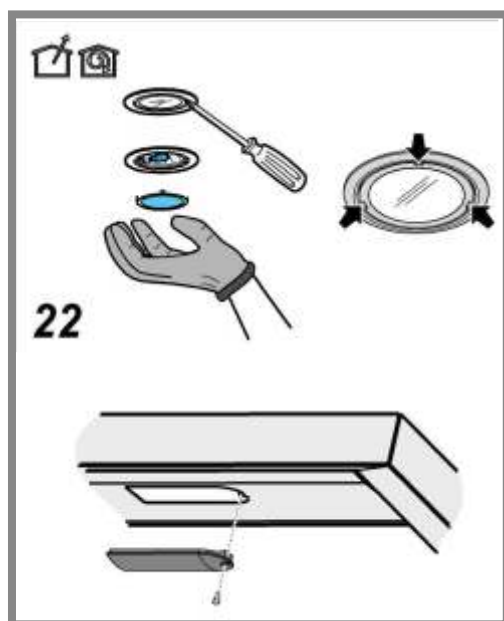
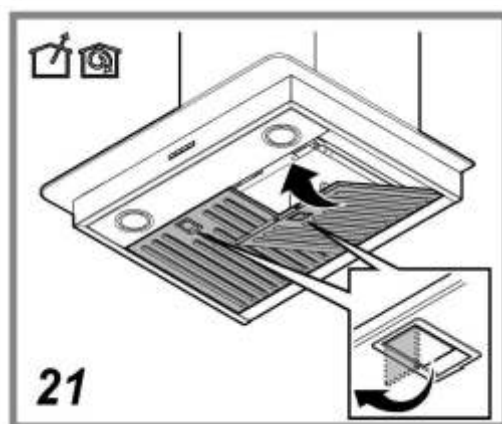
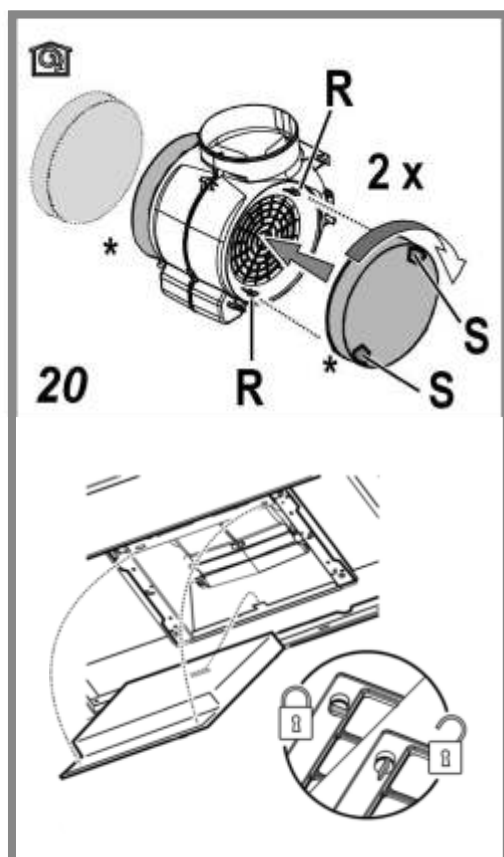
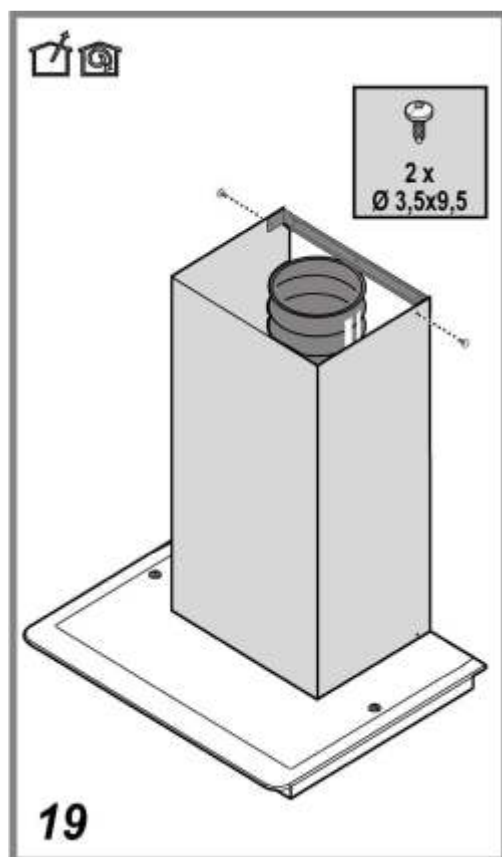


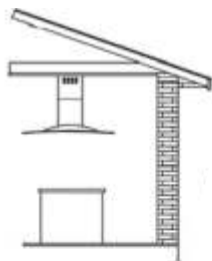




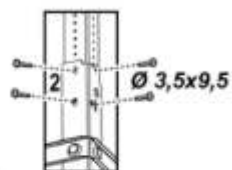
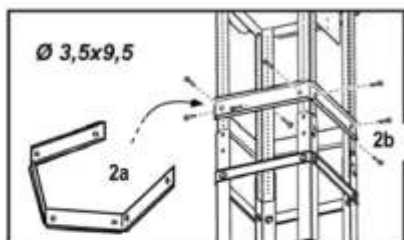
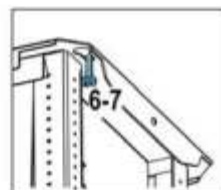
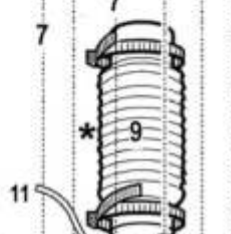
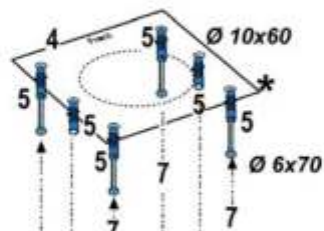
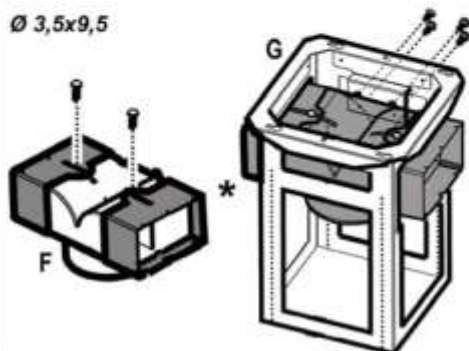




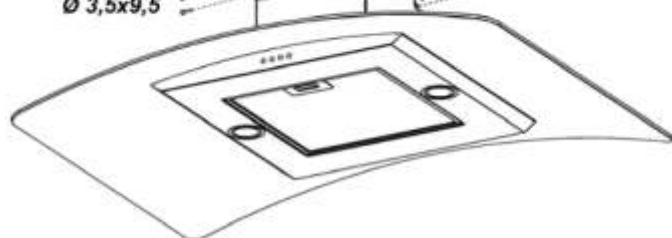


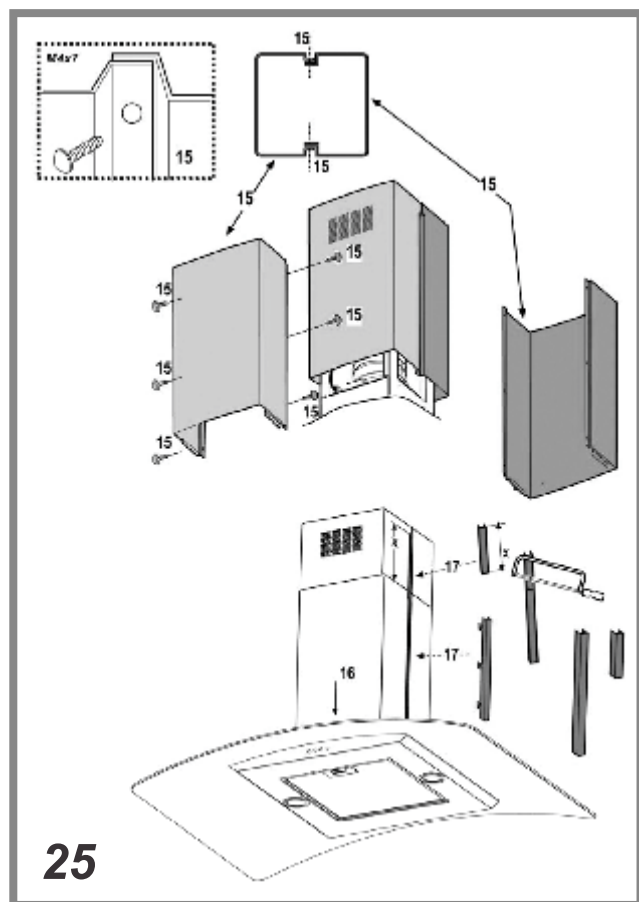
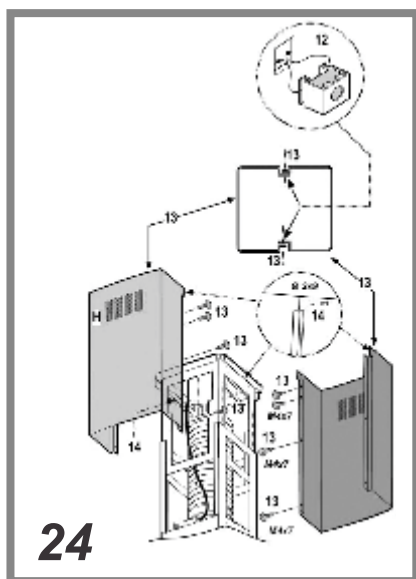


Ø 3,5x9,5



Ø 3,5x9,5





Closely follow the instructions set out in this manual. All responsibility, for any eventual inconveniences, damages or fires caused by not complying with the instructions in this manual, is declined. The hood is conceived for the suction of cooking fumes and steam and is destined only for domestic use.

The hood can look different to that illustrated in the drawings in this booklet. The instructions for use, maintenance and installation, however, remain the same.

Note: The elements marked with the symbol "(*)" are optional accessories supplied only with some models or elements to purchase, not supplied.



Caution


WARNING! Do not connect the appliance to the mains until the installation is fully complete.

- Before any cleaning or maintenance operation, disconnect hood from the mains by removing the plug or disconnecting the mains electrical supply.
- Always wear work gloves for all installation and maintenance operations.
- The appliance is not intended for use by children or persons with impaired physical, sensorial or mental faculties, or if lacking in experience or knowledge, unless they are under supervision or have been trained in the use of the appliance by a person responsible for their safety.
- This appliance is designed to be operated by adults. Children should not be allowed to tamper with the controls or play with the appliance. Never use the hood without effectively mounted grating!
- The hood must NEVER be used as a support surface unless specifically indicated.
- The premises where the appliance is installed must be sufficiently ventilated, when the kitchen hood is used together with other gas combustion devices or other fuels.
- The ducting system for this appliance must not be connected to any existing ventilation system which is being used for any other purpose such as discharging exhaust fumes from appliances burning gas or other fuels.
- The flaming of foods beneath the hood itself is severely prohibited.
- The use of exposed flames is detrimental to the filters and may cause a fire risk, and must therefore be avoided in all circumstances.
- **Any frying must be done with care in order to make sure that the oil does not overheat and ignite.**
- Accessible parts of the hood may become hot when used with cooking appliance. With regards to the technical and safety measures to be adopted for fume discharging it is important to closely follow the regulations provided by the local authorities.
- The hood must be regularly cleaned on both the inside and outside (AT LEAST ONCE A MONTH). This must be completed in accordance with the maintenance instructions provided in this manual. Failure to follow the instructions provided in this user guide regarding the cleaning of the hood and filters will lead to the risk of fires.
- Do not use or leave the hood without the lamp correctly mounted due to the possible risk of

electric shocks.

- **We will not accept any responsibility for any faults, damage or fires caused to the appliance as a result of the non-observance of the instructions included in this manual.**
- This appliance is marked according to the European directive 2002/96/EC on Waste Electrical and Electronic Equipment (WEEE). By ensuring this product is disposed off correctly, you will help prevent potential negative consequences for the environment and human health, which could otherwise be caused by inappropriate waste handling of this product.



- The symbol  on the product, or on the documents accompanying the product, indicates that this appliance may not be treated as household waste. Instead it should be taken to the appropriate collection point for the recycling of electrical and electronic equipment. Disposal must be carried out in accordance with local environmental regulations for waste disposal.

Use

The hood is designed to be used either for exhausting or filter version.



Ducting version

- In this case the fumes are conveyed outside of the building by means of a special pipe connected with the connection ring located on top of the hood.
- **Attention!** The exhausting pipe is not supplied and must be purchased apart. Diameter of the exhausting pipe must be equal to that of the connection ring.
- **Attention!** If the hood is supplied with active charcoal filter, then it must be removed. Connect the hood and discharge holes on the walls with a diameter equivalent to the air outlet (connection flange). Using the tubes and discharge holes on walls with smaller dimensions will cause a diminution of the suction performance and a drastic increase in noise.

Any responsibility in the matter is therefore declined.

! Use a duct of the minimum indispensable length.

! Use a duct with as few elbows as possible (Maximum elbow angle: 90°).

! Avoid drastic changes in the duct cross-section.

- The hood is equipped with a top air outlet (as shown in image 16) for discharge of fumes to the outside (exhaust pipe and pipe fixing clamps not provided). Recommended Duct pipe diameter should be 6 inch, max length 10 feet with 2 bends for optimum performance. For split kitchenhood distance between external unit and internal unit can be max 12 feet with 2 bend for optimum performance.



Filter version

- The aspirated air will be degreased and deodorised before being fed back into the room.

- In order to use the hood in this version, you have to install a system of additional filtering based on activated charcoal.
 - If it not be possible to discharge cooking fumes and vapour to the outside, the hood can be used in the **filter version**, fitting an activated carbon filter and the deflector **F** (only for Island model) on the support (bracket) **G**, fumes and vapours are recycled through the top grille **H** by means of an exhaust pipe connected to the top air outlet B and the connection ring mounted on the deflector F (exhaust pipe and pipe fixing clamps not provided).
 - Attention! If the hood is not supplied with carbon filter, then it must be ordered and mounted.
 - For split models the hood should be used only in ducting mode.
- The connecting instructions are supplied with the peripheral suction unit.

Installation

- The minimum distance between the supporting surface for the cooking equipment on the hob and the lowest part of the range hood must be not less than 50cm from electric cookers and 65cm from gas or mixed cookers.
- If the instructions for installation for the gas hob specify a greater distance, this must be adhered to.



Electrical connection

- The mains power supply must correspond to the rating indicated on the specification sticker situated inside the hood. Plug the mains cable provided with the hood to a socket in compliance with current regulations and positioned in an accessible area, after installation. If it not fitted with a plug (direct mains connection) or if the plug is not located in an accessible area, after installation, apply a double pole switch in accordance with standards which assures the complete disconnection of the mains under conditions relating to over-current category III, in accordance with installation instructions.
 - **Warning!** Before re-connecting the hood circuit to the mains supply and checking the efficient function, always check that the mains cable is correctly assembled.
- The hood is provided with a special power cable; if the cable is damaged, request a new one from Technical Service.

Mounting

The hood is supplied in two versions: model for installation to the wall and model for installation to the ceiling.

Before beginning installation:

- Check that the product purchased is of a suitable size for the chosen installation area.
- Remove the charcoal (*) filter/s if supplied (see also relative paragraph). This/these is/are to be mounted only if you want to use the hood in the filtering version.
- Check (for transport reasons) that there is no other supplied material inside the hood (e.g. packets with screws (*), guarantees (*), etc.), eventually removing them and keeping them.
- If possible, disconnect and move freestanding or

slide-in range from cabinet opening to provide easier access to rear wall/ceiling. Otherwise put a thick, protective covering over countertop, cook top or range to protect from damage and debris. Select a flat surface for assembling the unit. Cover that surface with a protective covering and place all canopy hood parts and hardware in it.

- In addition check whether near the installation area of the hood (in the area accessible also with the hood mounted) an electric socket is available and it is possible to connect a fumes discharge device to the outside (only suction version).
- Carry out all the masonry work necessary (e.g. installation of an electric socket and/or a hole for the passage of the discharge tube).

Expansion wall plugs are provided to secure the hood to most types of walls/ceilings. However, a qualified technician must verify suitability of the materials in accordance with the type of wall/ceiling. The wall/ceiling must be strong enough to take the weight of the hood. **Do not tile, grout or silicone this appliance to the wall. Surface mounting only.**

Installation wall model

1. Drawing a line on the wall with a pencil up to the ceiling, corresponding to the center line, will make the installation operations easier.
2. Apply the perforation diagram to the wall: the vertical center line printed on the perforation diagram should correspond to the center line drawn on the wall. In addition, the lower edge of the perforation diagram corresponds to the lower edge of the hood.
3. Make holes as indicated on the template, insert the wall dowels and screw 2 screws into the upper holes, leaving a space of about 1 cm between the head of the screw and the wall.

Note: Always make the holes indicated on the template. The upper 2 are for hooking the hood up while the lower holes (generally 1 central or more lateral) are for the definitive and safety fixing.

5. Apply duct cover support bracket (duct clamp) to the wall. Use duct clamp as a perforation diagram (the small slot in the support must coincide with the line previously drawn on the wall, if present), and mark two holes with a pencil. Make the holes and insert 2 dowels. Fix the flues support bracket to the wall with 2 screws.
6. Hang the hood to the two upper screws (see installation phase 3).
7. Introduce and screw the screws up into the hole(s) for the definitive fixing (**COMPULSORY!!**). Then, having checked the setting of the hood, **TIGHTEN ALL** the upper and lower **SCREWS**.

Note: the lower fixing points are visible removing the fats filters and they are at the sides and/or at the center of the hood (after having removed the frame of the carbon filter, if present, in the latter case).

In any case, we recommend using the lateral holes, when available, to increase the stability of the hood.

8. Connect a tube (tube and bands for fixing not supplied, to be purchased) for discharging the fumes to the connection ring placed over the

aspiration motor unit.

The other end of the tube should be connected to a device for expelling fumes on the outside of the hood in the aspiration version.

9. Place the duct cover on the hood and fix it with two screws to the duct clamp.
10. Connect the electricity.
11. Remount the carbon filter frame and the fat/s filter/s and check the perfect functioning of the hood.

Installation ceiling model (Island) Fig. 23-24-25
Very heavy product; hood handling and installation must be carried out by at least two persons.

1. Adjust the extension of the support structure of the hood. The final height of the hood depends on this adjustment. **Note:** In some cases the upper section of the trellis is fixed to the lower section with 1 or more screws. Check and remove them temporarily to allow the adjustment of the support structure.
2. Fix the two sections with a total of 16 screws (4 per corner).
Apply 1 or 2 brackets as reinforcement for extensions greater than the minimum (on the basis of what is envisaged as equipment).
Note: 1 bracket can already be fixed to the trellis temporarily with 2 screws during transport. Move it into the desired position or complete fixing it with 6 additional screws, as follows:
 - a. Slightly stretch the brackets to be fixed in order to be able to apply them outside the structure.
 - b. Position the reinforcement bracket immediately above the fixing point of the two sections of the structure and fix with a total of 8 screws (2 per corner).

Fix the second reinforcement bracket, if supplied, in a position midway between the first reinforcement bracket and the upper side of the trellis and fix with 8 screws (2 per corner).

3. **Note:** check that there is no obstacle to an easy fixing of the discharge tube (aspiration version) or the deflector (filtering version) in positioning the reinforcement bracket(s).
4. Hook the hood to the trellis and make sure that it is perfectly hooked up. Screw the 16 screws up (4 per corner) tightly to hook the hood to the trellis.
5. Apply the perforation diagram of the cooking top to the ceiling vertically (the center of the diagram must correspond to the center of the cooking top and the sides must be parallel to the sides of the cooking top – the side of the diagram with the word FRONT corresponds to the control panel side). Prepare the electrical connection.
6. Make holes as indicated (6 holes for 6 wall dowels – 4 dowels for hooking), and screw 4 screws into the external holes, leaving a space of about 1 cm between the head of the screws and the ceiling.
7. Hook the trellis to the ceiling with 4 screws, see operation 4).
8. Screw the 4 screws up tightly.
9. Introduce and screw another 2 screws tightly into the holes for fixing the safety elements remaining free.
10. Introduce a discharge tube inside the trellis and connect to the connecting ring of the motor space (discharge tube and bands not supplied).

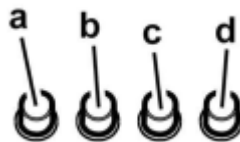
The discharge tube must be long enough to reach the exterior (aspiration version) or the deflector (filtering version).

11. **Only for filtering version:** mount deflector **F** onto the trellis and fix it with 4 screws to the opposite bracket and finally connect the discharge tube to the connection ring placed on the deflector.
12. Connect the electricity to the domestic power. Power must be supplied only after the installation has been completed.
13. Put the nuts equipped with fixing hooks inside the sections of the upper and lower flues in correspondence with the rectangular slots. A total of 14 nuts should be mounted.
14. Couple the two upper sections of the flue to cover the trellis so that one of the slits present on the sections is placed on the same side of the command panel and the other on the opposite side.
Screw the two sections up with 8 screws (4 per side – also see the plan diagram for coupling the two sections).
15. Fix the upper flue set to the trellis near the ceiling with two screws (one per side).
16. Couple the two lower sections of the flue to cover the trellis using 6 screws (3 per side – also see the plan diagram for coupling the two sections).
17. Insert the lower section of the flue into the opposite housing to cover the motor space and the electrical connection box completely and fix with two screws from inside the hood.
18. Apply the 2 tabs (supplied) to cover the fixing points of the sections of the lower flue (**ATTENTION! THE TABS FOR THE LOWER FLUE ARE RECOGNISABLE BECAUSE THEY ARE NARROWER AND LESS DEEP**). The larger and deeper tabs are those to use for the upper flue and are to be cut to measure.
19. Supply the electrical power again acting on the central electrical panel and check the correct functioning of the hood.

Operation

Use the high suction speed in cases of concentrated kitchen vapours. It is recommended that the cooker hood suction is switched on for 5 minutes prior to cooking and to leave in operation during cooking and for another 15 minutes approximately after terminating cooking.

Model with 4 push-buttons control panel



- a. ON/OFF light switch
- b. Speed 1/OFF switch
- c. 2-speed selection
- d. 3-speed selection

Model with 6 operating buttons (TOUCH)

To select the functions of the hood just touch the commands.

0 1 2 3  



Light key ON/OFF



Intensive speed selection key (suction power) - duration 5 minutes - press again to return to previous setting.



High-speed selection key (suction power).



Medium-speed selection key (suction power)-when flashing it indicates the need to wash or replace the carbon filter. This signal is normally deactivated. To activate the signal, exclude the electronics pressing button **0** for 3 seconds.

Then press buttons **1** and **2** contemporaneously for 3 seconds, at first only button **1** will flash, then both buttons **1** and **2** to indicate activation. Repeat the operation to deactivate the signal, at first buttons **1** and **2** will flash, then only button **1** to indicate deactivation.



Low-speed selection key (suction power) -when flashing it indicates the need to wash the fats filter.



Motor key OFF (stand by) - excludes the electronics - reset wash/replace filters signals.

MOTOR OFF

Press briefly to switch the motor off.

RESET FILTERS SIGNALS

In functioning mode, after carrying out filter maintenance, press the key until hearing the sound signal. The flashing LED **1** (baffle filter) or **2** (carbon filter) stops flashing.

EXCLUDING THE ELECTRONICS

Press the key for 3 seconds. The hood command electronics will be excluded.

This function can be useful during the product cleaning operations.

Just repeat the operation to reinsert the electronics.

If the hood fails to operate correctly, briefly disconnect it from the mains power supply for almost 5 sec. by pulling out the plug. Then plug it in again and try once more before contacting the Technical Assistance Service.

Functioning - Model with display (TC3V/TC4V)



F1 – ON/OFF Timer (Automatic Shut-off/Off)

The Timer function is activated with the engine running (at any speed); after 5 minutes, the engine shuts down automatically. During the timing phase, the display (D) shows the remaining working time, in minutes (flashing).

To stop the timer function, before these 5 minutes, press again the F1 key.

Note: By turning off the engine manually (via F3), the timer function is deactivated.

F2 - ON / OFF Lights

Allows turning on and off lights.

F3 – Engine Speed Decrease / OFF

Decreases the speed of the engine, until it shuts off.

F4 - ON / Engine Speed Increase

Enables the startup of the engine and the speed increase, from 1° to 3°/4°

D - Display

Allows the viewing of:

- The motor speed status
- The remaining time to Automatic Shut-off, when the Timer function is activated

Maintenance

ATTENTION! Before performing any maintenance operation, isolate the hood from the electrical supply by switching off at the connector and removing the connector fuse.

Or if the appliance has been connected through a plug and socket, then the plug must be removed from the socket.

Cleaning

The cooker hood should be cleaned regularly (at least with the same frequency with which you carry out maintenance of the fat filters) internally and externally. Clean using the cloth dampened with neutral liquid detergent. Do not use abrasive products. **DO NOT USE ALCOHOL!**

WARNING: Failure to carry out the basic cleaning recommendations of the cooker hood and replacement of the filters may cause fire risks.

Therefore, we recommend observing these instructions.

The manufacturer declines all responsibility for any damage to the motor or any fire damage linked to inappropriate maintenance or failure to observe the above safety recommendations.

Baffle filter

Traps cooking baffle particles.

This must be cleaned once a month (or when the filter saturation indication system – if envisaged on the model in possession – indicates this necessity) using non aggressive detergents, either by hand or in the dishwasher, which must be set to a low temperature and a short cycle.

When washed in a dishwasher, the baffle filter may discolor slightly, but this does not affect its filtering capacity.

To remove the baffle filter, pull the spring release handle. **(See Fig. 21)**

Charcoal filter (filter version only)

It absorbs unpleasant odours caused by cooking.

NON-washable activated charcoal filter

The saturation of the **charcoal filter** occurs after more or less prolonged use, depending on the type of cooking and the regularity of cleaning of the baffle filter.

In any case it is necessary to replace the charcoal filter at least every four months.

The charcoal filter may NOT be washed or regenerated.

Disposal of charcoal filters must be carried out in accordance with local environmental regulations for waste disposal.

Replacing lamps

Disconnect the hood from the electricity.

Warning! Prior to touching the light bulbs ensure they are cooled down.

Model with halogen light bulbs:

1. Using a flat head screwdriver or equivalent tool, carefully pry loose the light cover.
2. Remove the damaged light and replace with a new **12Volt, 20 Watt** (Maximum) halogen light made for a **G-4** base **SUITABLE FOR USE IN OPEN LUMINAIRES**. Follow package directions and do not touch new light with bare hands.
3. Reinstall the light cover. (it will snap shut).

Model with incandescent light bulbs:

1. Remove the overhead light leveraging on the fixing clip with a screwdriver or similar tool.
2. Replace the damaged light bulb.
Only use bulbs of **40W max (E14)**, making sure you do not touch them with your hands.
3. Close the overhead light again with the clip.

If the lights do not work, make sure that the lamps are fitted properly into their housings before you call for technical assistance.

Model with LED Lights

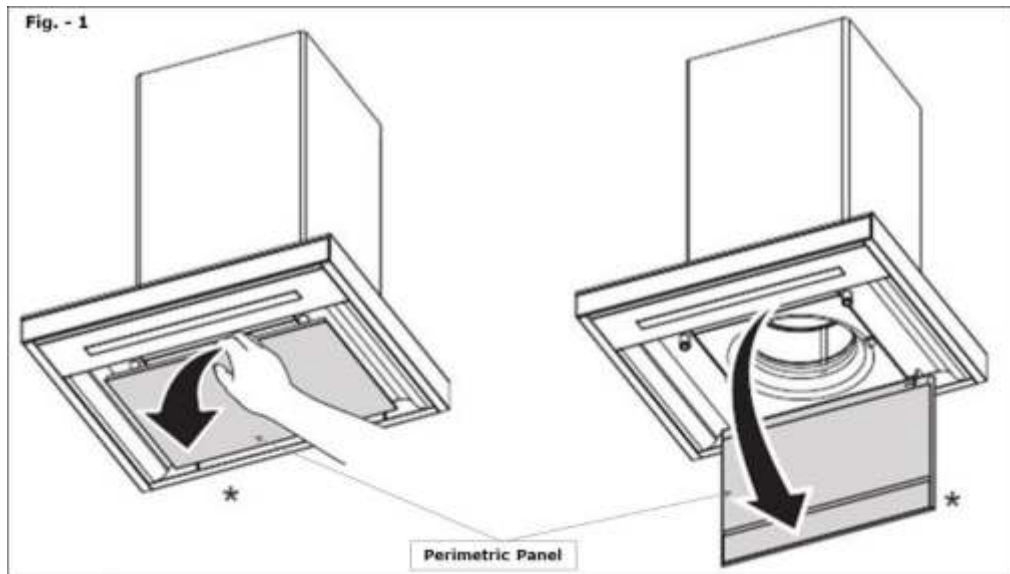
The hood is equipped with a lighting system based on LED technology.

The LEDs guarantee an optimum lighting, a duration up to 10 times as long as the traditional lamps and allow to save 90% electrical energy.

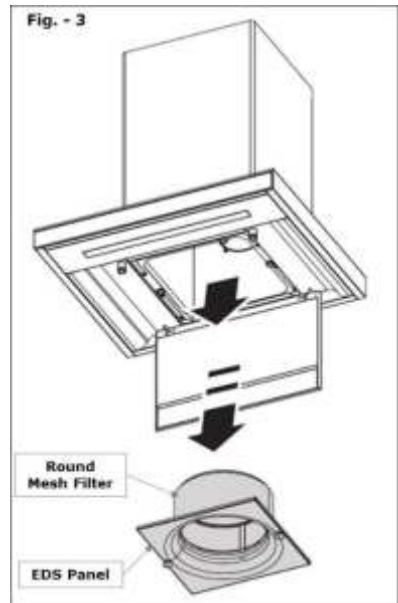
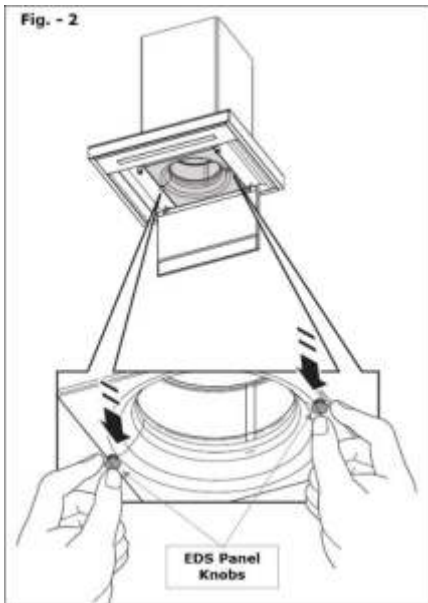
For replacement, contact the technical service.

EDS FILTER CLEANING PROCEDURE

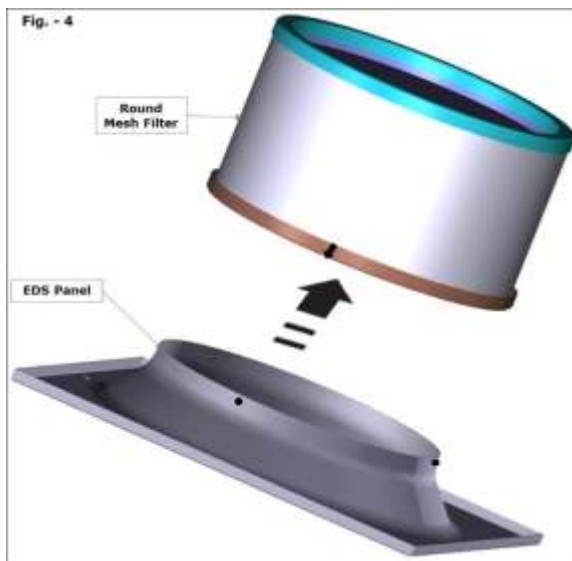
- 1) Open the perimetric panel as shown in Fig.1



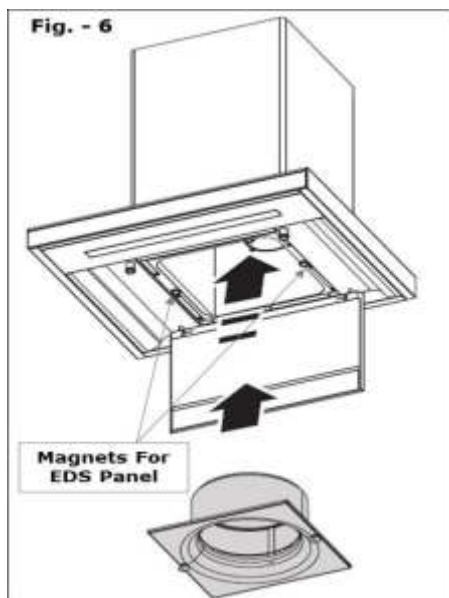
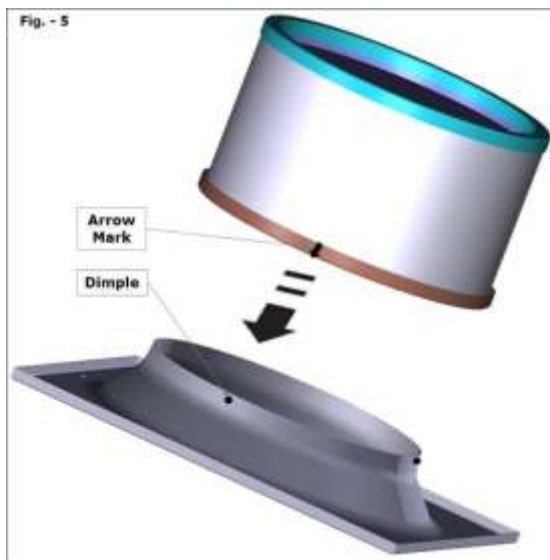
- 2) Remove the EDS panel with mesh filter by pulling the knobs as shown in Fig.2&3.



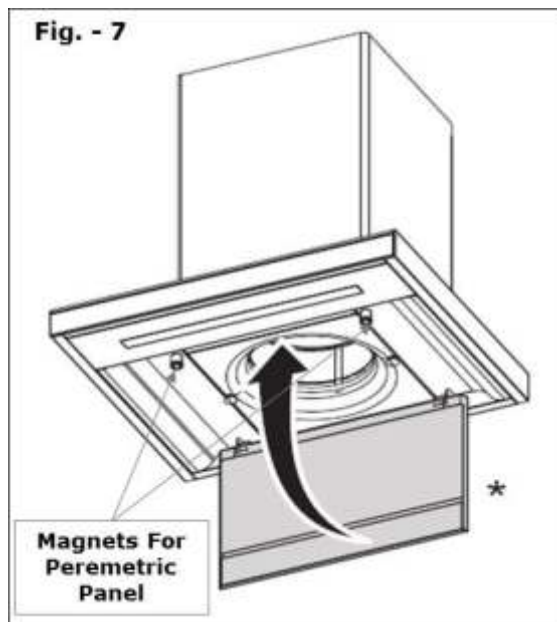
- 3) Pull out the filter from the panel as shown in Fig.4 for cleaning by adding neutral liquid detergent in warm water. After cleaning leave the filter to dry.



- 4) Fix the filter to the panel by matching the arrow provided on bottom of filter with the dimple on EDS panel. Press them together and ensure that the filter gets fixed tightly with panel. Fig.-5
- 5) Fix the panel into the hood as shown in Fig.6. Ensure that the panel gets stuck to the magnets.



- 6) Close the perimetric panel as shown in Fig.7. Ensure that the perimetric panel gets stuck to the magnets.



* Perimetric panel is optional accessories supplied only with selected models.

Remark : Do not open the perimetric panel while cooking. It must be opened only while cleaning the filter.

For optimum performance

1. Install using 6 inch duct pipe or use charcoal filters for recycling mode.
2. Centre of duct hole should be 660mm from top of EDS kitchen hood body.

Troubleshooting

Fault	Cause	Solution
The lights ON but fan(rotor) or motor not working.	Rotor Jam	Switch off the unit and call Elica Customer Care.
	Capacitor has failed	
	Control switch fail	
The lights & fan do not work	No power supply	Plug another appliance & check
	Loose power cord	Unplug the power cord & plug it again from both the ends
Vibration or Noise	Fan damaged	Call Elica Customer Care
	Not installed properly	
	Not hung properly	Take down the hood and check wethere the mounting screws are fixed properly & tightly.
Suction is low	Distance between hood and cooktop/hob is more	Call Elica Customer Care
	Filters are saturated	Clean the filters as directed on page no.12
In Touch model button 1 light starts blinking	Filters are saturated	Follow instructions as directed on page no. 11

WORLD'S NO.1 IS JUST ONE OF OUR STRENGTHS

With over 2.5 crore hoods sold in
last 6 years, today Elica is by far
the world's largest
kitchenhood company.

Almost, every 3rd kitchenhood
manufactured in Europe is
an Elica product.



Elica PB India Private Limited

37/1/1 Kondhwa Pisoli Road, Pisoli, Pune 411 060, India

Tel. : +91 020 26934011 / 12 **E-mail :** customercare@elica.in

Website : www.elicaindia.com **Customer Care :** 1800 233 0007 / 9243007666

The manufacturer does not guarantee for possible in exactitudes due to printer's or transcription errors, contained in this booklet.
The company/manufacturer reserves the right to bring in any moment modifications he should judge necessary or useful.